

Connections

March/April 2016



Disaster response ensures reliable service even during the unexpected

After December's record rains damaged a sewer main, the District showed decisive leadership in ensuring continuous service and caring for the environment.

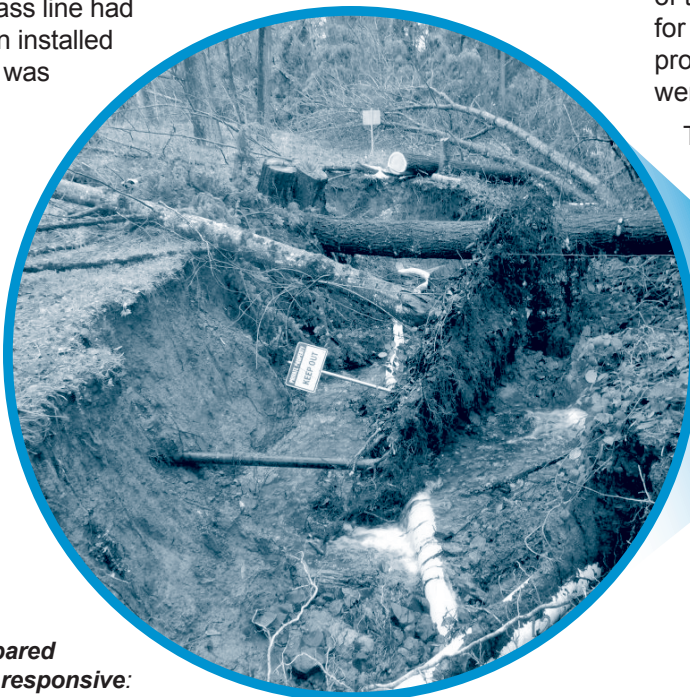
During the heavy rainfall in December that caused Washington state to apply for disaster funding, a landslide in Hazel Dell buried a portion of Tenny Creek and damaged a sewer main that served more than 450 residential customers. When the District was notified of the break at 10 a.m. on December 9, the area was a mess of large, toppled fir trees, unstable slopes and a broken sewer line.

The District team jumped into action. By 6 p.m. the same day, a flexible temporary bypass line had been installed and was

being monitored by staff 24/7. This allowed customers to remain in service and reduced risk of discharge. It was then essential to get more permanent measures in place. Over the following days and weeks, the District made timely and strategic decisions. Emergency resources were in place with consultants, contractors, government agencies and neighbors, allowing plans to be developed and environmental permits obtained in record time.

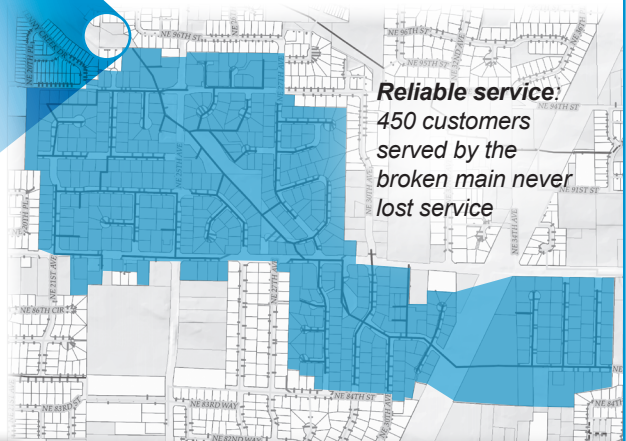
Work was performed in the middle of winter, under weather conditions of heavy rain, and during the holiday season. Thanks to decisive action and innovative thinking, a project that would usually take more than a year was completed in less than two months. Because of this, the cost was much less than would be expected for an undertaking of this scope. During the entire process, customers were kept well informed and never went without service.

The District's strong leadership and emergency preparedness ensured this potentially messy and disruptive situation resulted in continuous service, replaced infrastructure and restored habitat. *more on reverse >*



Prepared and responsive:

A temporary bypass line was in place the same day; permanent repairs were complete within weeks



Reliable service:
450 customers served by the broken main never lost service

Hours of Operation

Monday-Friday,
8 a.m. – 5 p.m.
Closed Weekends
& Holidays

Emergency?

Call 24/7:
360-750-5876

Commissioners

Norm Harker
Neil Kimsey
Denny Kiggins

General Manager

John M. Peterson

Visit us online at www.CRWWD.com

8000 NE 52nd Court, Vancouver, WA 98665 • Write: PO Box 8979, Vancouver, WA 98668 • Phone: (360) 750-5876 • Fax: (360) 750-7570



continued from front >

The Tenny Creek repair project not only repaired the sewer main, but also rebuilt and restored the affected section of the creek in compliance with permit requirements. Mindful of the District's core goals of delivering cost-effective and reliable service while protecting the environment and public health, the designs for reconstruction creatively used fallen logs to make fish-friendly features in the stream. This saved the cost of hauling them out and also enhanced the stream habitat.

Environmental stewardship:

The District used innovative thinking to meet environmental requirements of the project.

Top photo: The waterway was moved laterally while the sewer line and creek bed were reconstructed.



Left: A culvert was removed, returning a buried stream section into an open, natural channel. Toppled trees from the landslide were used to create fish-friendly features in the new waterway.

Work on Highway 99 coming up

The sanitary sewer pipe along Highway 99, between NE 63rd and NE 78th Streets, will be replaced as part of the District's proactive effort to keep our sewer system operating safely and efficiently. The project will go out for construction bids in February and construction will likely start in May. Sign up on the project website to receive email updates: www.crwwd.com/projects/hwy99sewer.html

Are we prepared for a disaster?

The District is participating in Clark Regional Emergency Services Agency's (CRESA) update process for the Clark County Hazard Mitigation Plan. This plan will provide a foundation for a long-term community strategy to reduce disaster losses and break the cycle of disaster damage, reconstruction, and repeated damage. The plan needs input from the community; your opinions, experience, and knowledge of natural hazards will help identify projects and strategies that will lower the risk of injury, property damage, and other impacts during future disasters. To learn more about the project and how it affects you, become involved in the planning process, or find out about upcoming events, visit the project website at:

<http://cresa911.org/hazmitplanproject/>



Disaster events include storms, earthquakes, and wildfires

Talking shop and catching fish



Join the Kline Kids Fishing Derby for a day of fun at Salmon Creek Park. Stop by the District booth to learn from Frog and F.O.G.G. about how to help care for our water resources!

April 8: Kids Fishing Derby: "Special Needs Event," 8 a.m. – 4 p.m.

April 9: Kids Fishing Derby: "The Main Event," 8 a.m. – 4 p.m.

Registration is open now. Find out more and register at: www.kline-kf.org.

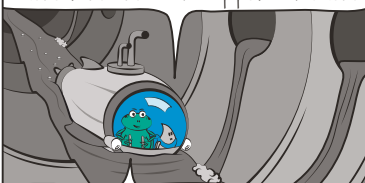
Event Calendar

**APRIL
8/9**

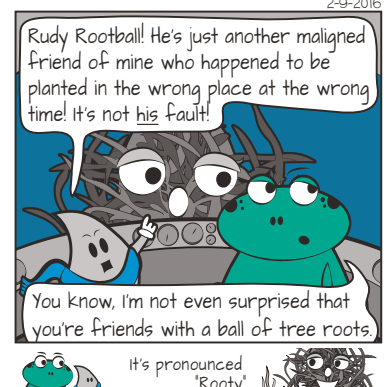
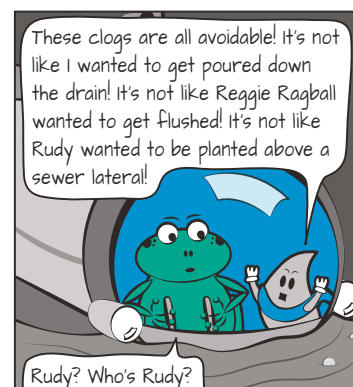
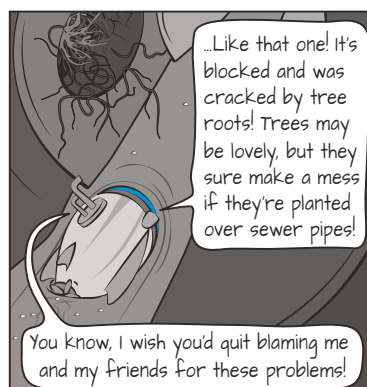
Kline Kids Fishing Derby

Frog and the F.O.G.G.

There sure are a lot of pipes down here.



LATERALS, F.O.G.G.! According to my map, there are over **28,000** of them connecting homes to our wastewater system. They are the most common places where clogs happen ...



2-9-2016