

Connections

May/June 2017



Supporting Community Growth: Summer Construction

Four major projects coming up this summer are perfect examples of how the District works with local partners to support economic development and meet future need.

In many cases, the District is partnering with the County or cities to complete sewer work at the same time as other projects. This requires more coordination from the District but creates efficiencies in the long run – ultimately saving money and minimizing impacts to neighbors and the traveling public.



10th Ave. over Whipple Creek:

Sewer lines are being installed during County road work. Improvements support the industrial lands corridor and job growth, and streamline traffic flow to the fairgrounds area. The District is investing more than \$3 million in this area over the next couple years.

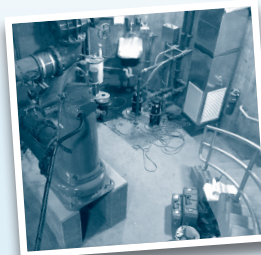


Royle Rd: To support residential development along S 45th Ave. and planned school/sports complex in Ridgefield, the District is constructing a new pump station and force main at Royle Rd. between S 15th St. and Hillhurst Rd. This is part of a larger project that is a key underpinning of planned development in Ridgefield.



NE 119th St: Sewer lines will be installed between NE 50th Ave. and NE 72nd Ave. This is one of the few east/west roadways that extend across the rapidly developing urban area and

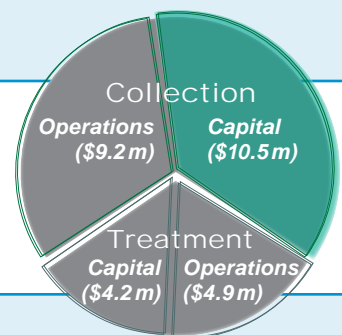
industrial lands. This is second phase of work; the section of 119th St. from 72nd Ave. to 87th Ave. is nearing completion and 87th Ave. to 112th Ave. is planned next.



Glenwood: The Glenwood Pump Station is one of the District's largest and a critical link in the collection system. This summer, upgrades will expand capacity to accommodate expected growth in the Brush Prairie area.

A Piece of the Budget Pie

These projects are part of the Capital Improvement Program (CIP) to expand and improve the system. Many smaller projects this summer will reinvest in the current system under the Restoration & Replacement (R&R) program. The CIP and R&R programs are part of the Collection System / Capital portion of the annual budget.



Click for More

Find details of these and other projects on the District's Construction Forecast web page: crwwd.com/projects/construction-forecast.html.

Also, make sure to explore the interactive project map!

Information on Clark County's road projects at: clark.wa.gov/public-works.

Hours of Operation

Monday-Friday
8 a.m. – 5 p.m.
Closed Weekends
& Holidays

Emergency?

Call 24/7:
360-750-5876

Commissioners

Norm Harker
Denny Kiggins
Neil Kimsey

General Manager

John M. Peterson

Visit us online at www.CRWWD.com

8000 NE 52nd Court, Vancouver, WA 98665 • Write: PO Box 8979, Vancouver, WA 98668 • Phone: (360) 750-5876 • Fax: (360) 750-7570



Senior Low-Income Discounts: Enroll or Re-enroll this Spring

Seniors aged 62 or older who own and live in their homes may qualify for a low-income discount. For 2017/2018, a household that makes no more than \$20,025/year qualifies for a 35 percent discount, and a household that makes no more than \$ 32,040/year qualifies for a 20 percent discount.



Last year, the District was able to offer assistance to approximately 200 individuals. All district customers support this program at a cost of approximately a nickel per month.

The new discount rates begin July 1, 2017. Seniors currently receiving the discount will be mailed instructions in May or June. To review program guidelines and find out if you're eligible, stop by the office, give us a call or go online: www.crwwd.com/senior-discount.html.

Summer's Coming and the District's Ready!

Catch Frog and F.O.G.G. at parades and events around the community this summer. They'll be giving kids (and adults) tips and give-aways all about their favorite topic – caring for our wastewater system!



Calendar of Events

May
20

Hazel Dell
Parade
of Bands

June
3

Fire District 6
Open House and
Family Day

July
4

Ridgefield
Parade

Reliability Tip: Don't Flush Medicines! Know Where They Go.

Medications in Our Water

Disposing of medication is a growing environmental problem. A recent U.S. government survey found that many medications, including prescription drugs, over-the-counter drugs, and hormones, are present at very low but detectable quantities in waterways nationwide. This creates potential health hazards for humans, fish and wildlife.

Wastewater treatment plants are unable to completely remove flushed medications because they they are resistant to the biological treatment process. Throwing medications in the garbage is equally bad, as medications can dissolve in landfills and pass into groundwater.

What You Can Do

You can help reduce the flow of medications into the environment by properly disposing of your unwanted medications. Here's what you should know.

- **DO return your medications** via a take-back program at your local pharmacy, doctor's office or law enforcement agency.
- **DO find out if your medication is a controlled substance**, such as many prescription pain medicines.
- **DO visit** www.takebackyourmeds.org for answers to your questions, including take-back locations in Clark County, and what's considered a controlled substance.
- **DON'T flush medications** or put them in the garbage.

Frog and the F.O.G.G.

