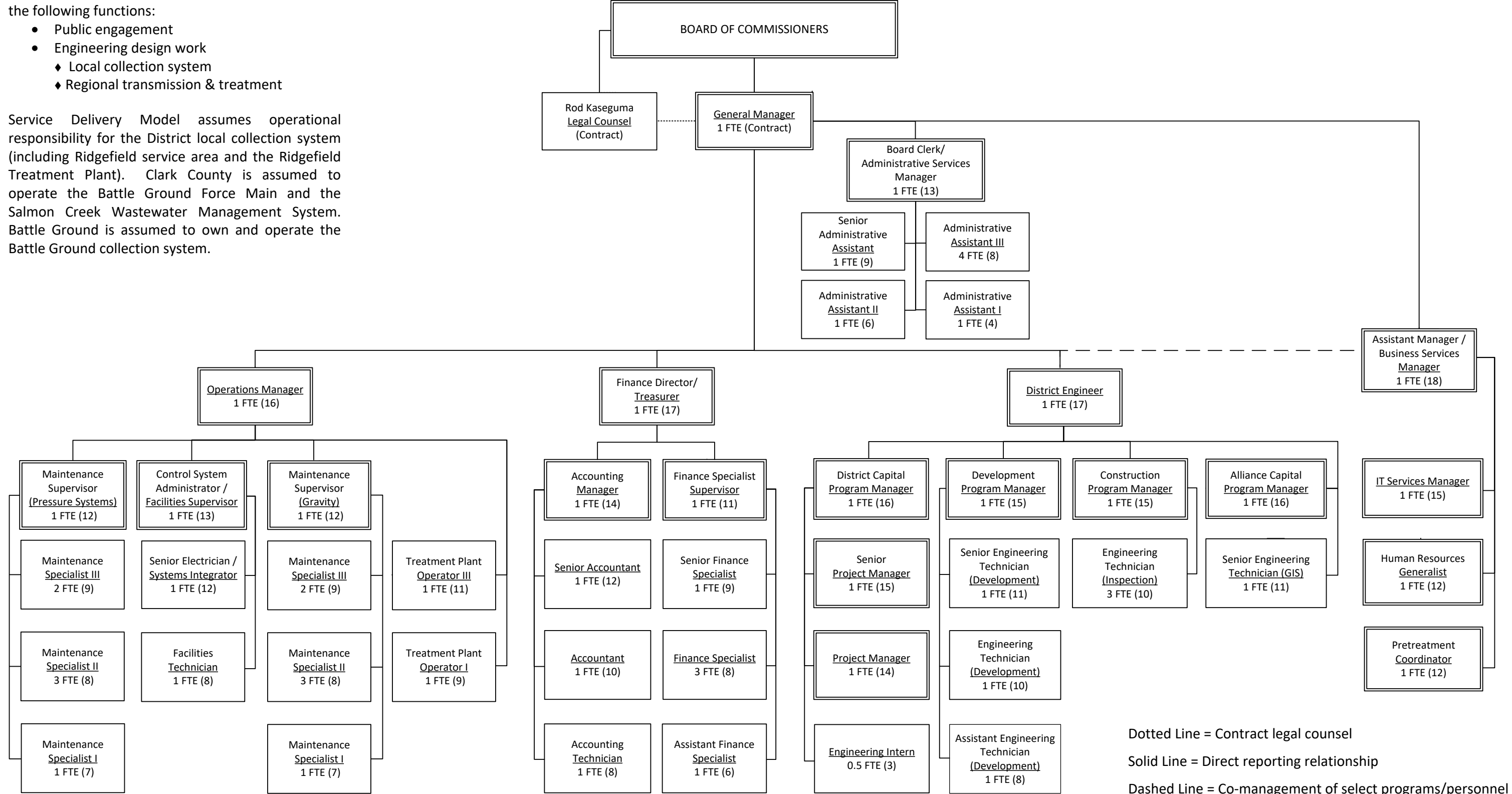


EXHIBIT "A"
CLARK REGIONAL WASTEWATER DISTRICT
ORGANIZATION CHART:
ADOPTED BY RESOLUTION #1721

Service Delivery Model requires contract support for the following functions:

- Public engagement
- Engineering design work
 - ◆ Local collection system
 - ◆ Regional transmission & treatment

Service Delivery Model assumes operational responsibility for the District local collection system (including Ridgefield service area and the Ridgefield Treatment Plant). Clark County is assumed to operate the Battle Ground Force Main and the Salmon Creek Wastewater Management System. Battle Ground is assumed to own and operate the Battle Ground collection system.



Dotted Line = Contract legal counsel

Solid Line = Direct reporting relationship

Dashed Line = Co-management of select programs/personnel

() = Salary Range

Total FTE: 58.5

09/18/18 Updated by General Manager per authority granted by District Code Section 2.16.010