



OCTOBER 2019

## Clark Regional Wastewater District Campus



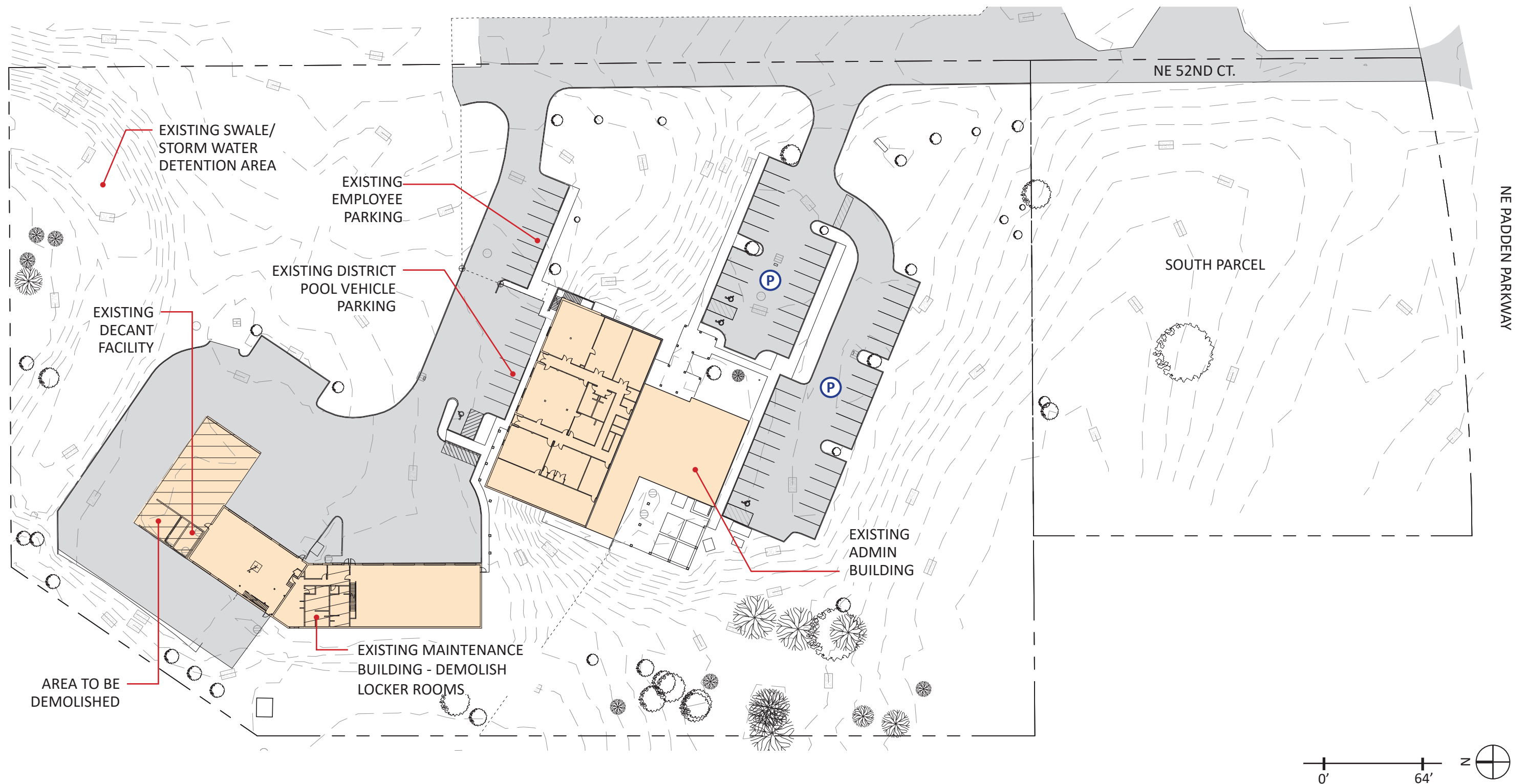
mwa architects



### 95% Project Update

- Campus Design Update
- Summary of Costs and Options
- Schedule and Sequencing
- Next Steps



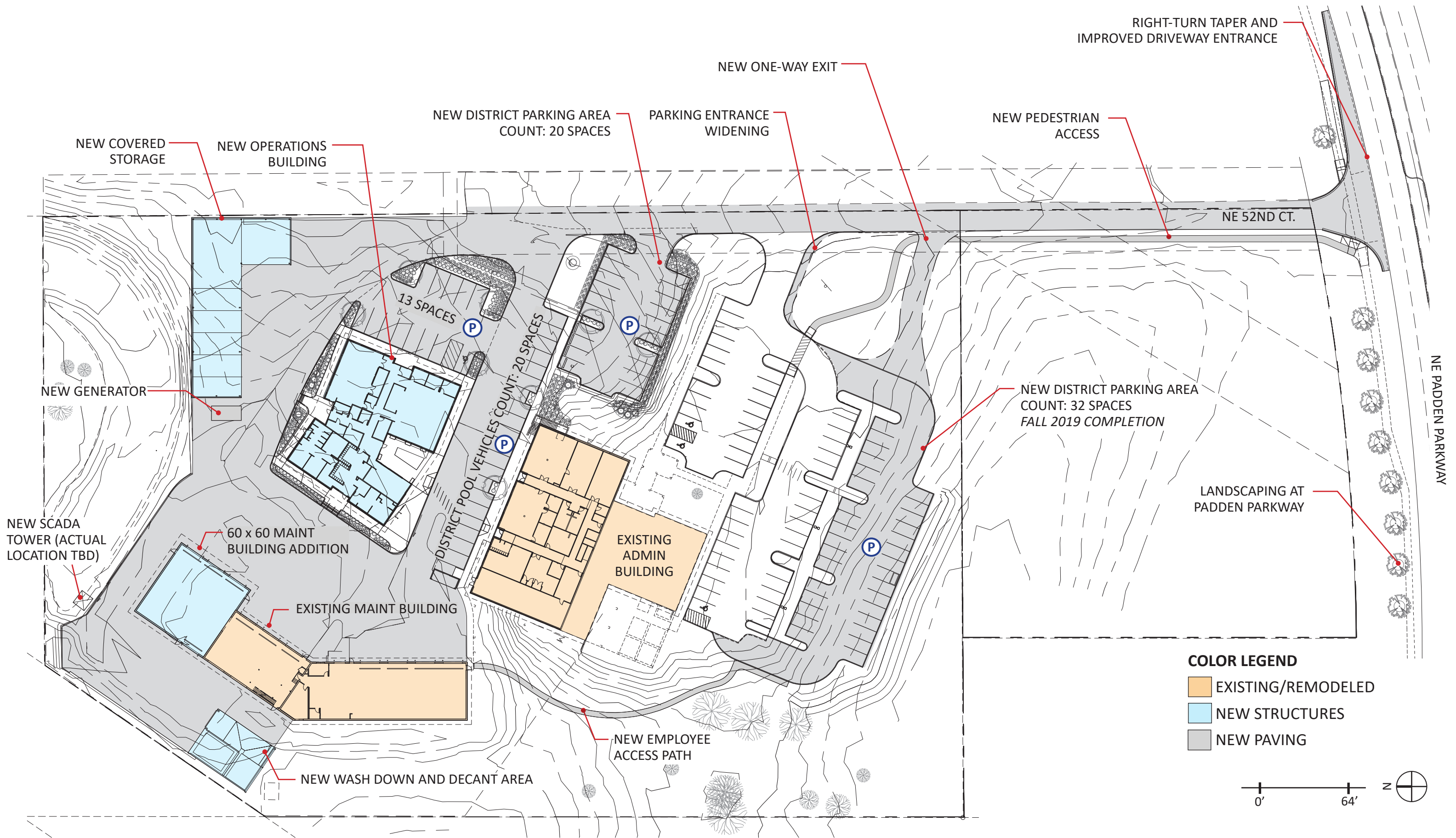


## EXISTING SITE PLAN

CLARK REGIONAL WASTEWATER DISTRICT CAMPUS

SCALE: 1/64" = 1'-0"





## PROPOSED SITE PLAN

CLARK REGIONAL WASTEWATER DISTRICT CAMPUS

SCALE: 1/64" = 1'-0"



#### DEPARTMENT LEGEND

- CONFERENCE
- COMMON
- OFFICE
- SUPPORT

0' 16'



## OPERATIONS PLAN

CLARK REGIONAL WASTEWATER DISTRICT CAMPUS

SCALE: 1/16" = 1'-0"





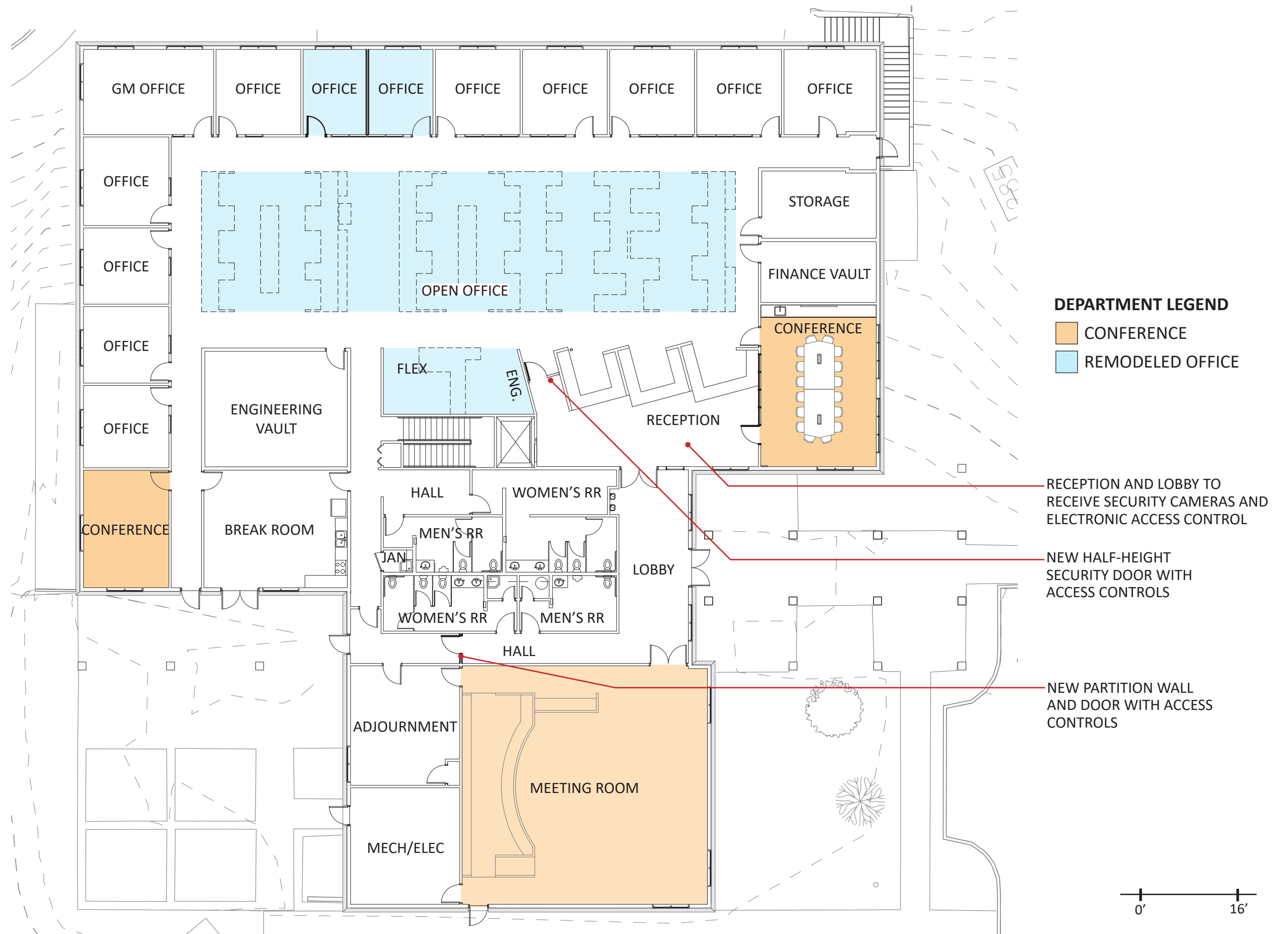


**OPERATIONS COVERED ENTRY COURTYARD**

CLARK REGIONAL WASTEWATER DISTRICT CAMPUS







## EXISTING ADMIN BUILDING UPPER LEVEL

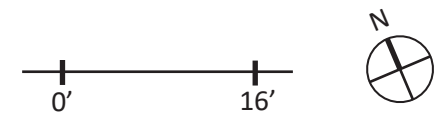
CLARK REGIONAL WASTEWATER DISTRICT CAMPUS

SCALE: 1/16" = 1'-0"



**DEPARTMENT LEGEND**

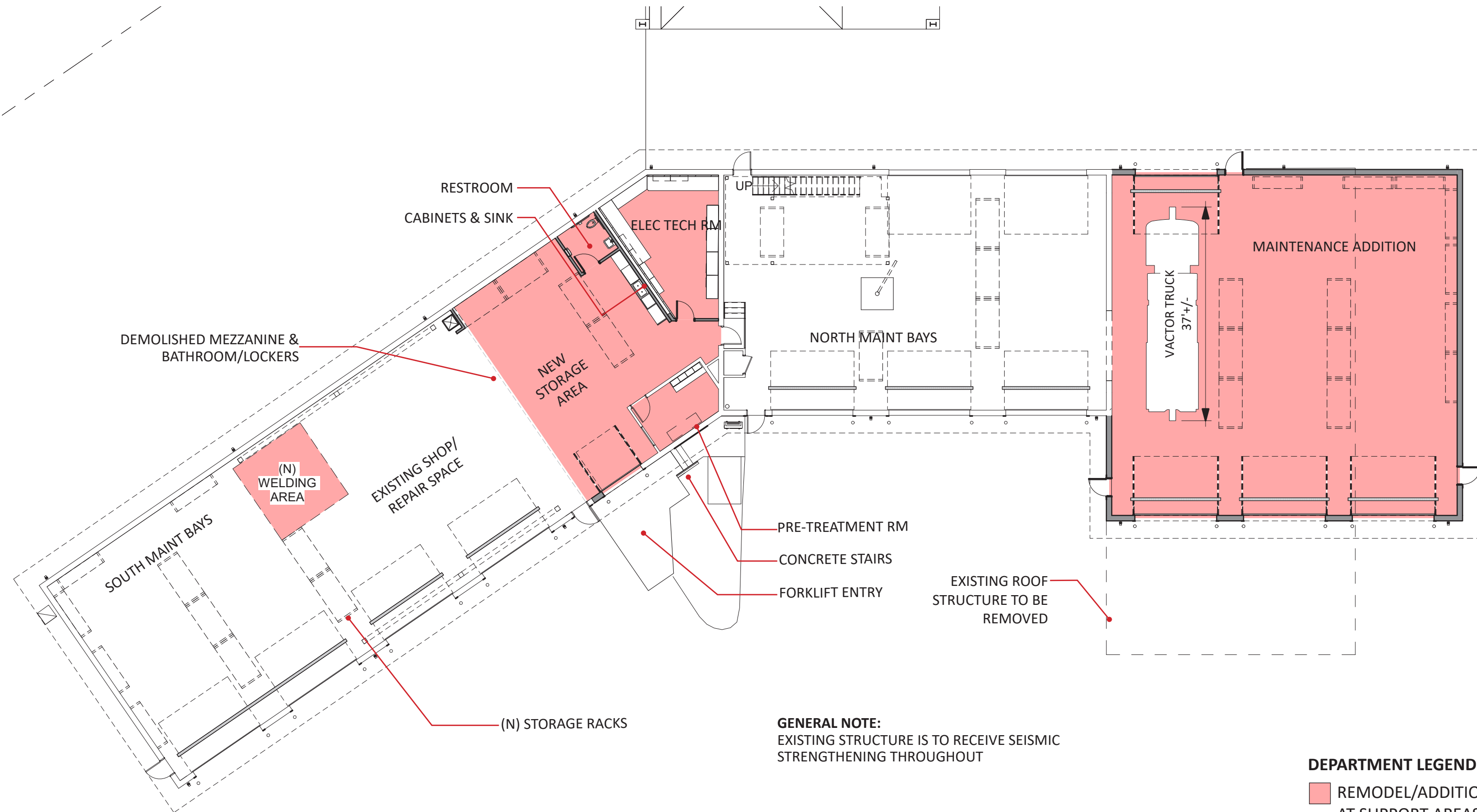
- REMODELED OFFICE
- SUPPORT
- CONFERENCE



**EXISTING ADMIN BUILDING LOWER LEVEL**

CLARK REGIONAL WASTEWATER DISTRICT CAMPUS

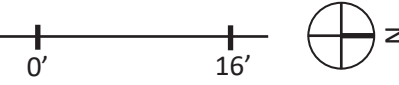
SCALE: 1/16" = 1'-0"



**GENERAL NOTE:**  
 EXISTING STRUCTURE IS TO RECEIVE SEISMIC  
 STRENGTHENING THROUGHOUT

**DEPARTMENT LEGEND**

REMODEL/ADDITION  
 AT SUPPORT AREAS







**ENTRY DRIVE LOOKING SOUTH**  
CLARK REGIONAL WASTEWATER DISTRICT CAMPUS

Campus Improvement Project - September 2019 Cost Summary					
Project Elements	Original	60%	95% Design	60% - 95% Change	% Change
<b>Delivery Costs</b>	3,310,487	3,175,819	2,277,066	(898,753)	-28.3%
<b>Construction</b>					
<i>Admin Building</i>	2,251,307	1,401,939	1,513,519	111,580	
<i>Operations Building</i>	2,218,994	3,751,298	4,206,910	455,612	
<i>Maintenance Building</i>	1,094,289	1,345,322	1,444,954	99,631	
<i>Covered Area/Decant</i>	898,607	642,623	737,494	94,871	
<i>Sitework</i>	1,813,020	1,734,345	2,057,886	323,541	
<i>Contingency*</i>	1,241,432	1,065,063	796,861	(268,202)	
<b>Construction Subtotal</b>	9,517,649	9,940,591	10,757,624	817,033	8.2%
<i>Furniture, Fixtures &amp; Equipment</i>	556,459	649,856	716,538	66,682	
<b>Total Project Costs</b>	<b>13,384,594</b>	<b>13,766,266</b>	<b>13,751,229</b>	<b>(15,037)</b>	<b>-0.1%</b>

Note: All costs in 2019 dollars



		2019							2020												2021												2022				
		Jun	Jul	Aug	Sep	Oct	Nov	Dec	Jan	Feb	Mar	Apr	May	Jun	Jul	Aug	Sep	Oct	Nov	Dec	Jan	Feb	Mar	Apr	May	Jun	Jul	Aug	Sep	Oct	Nov	Dec	Jan	Feb	Mar	Apr	May
	Parking Lot Construction																																				
①	Campus Project Bid Award																																				
	Site Prep/Utilities																																				
①	Operations Building																																				
①	Covered Storage																																				
②	Maintenace Building																																				
②	Decant Facility/Washdown																																				
②	Administration Bldg. First Floor																																				
③	Administration Bldg. Second Floor																																				
④	Sitework																																				



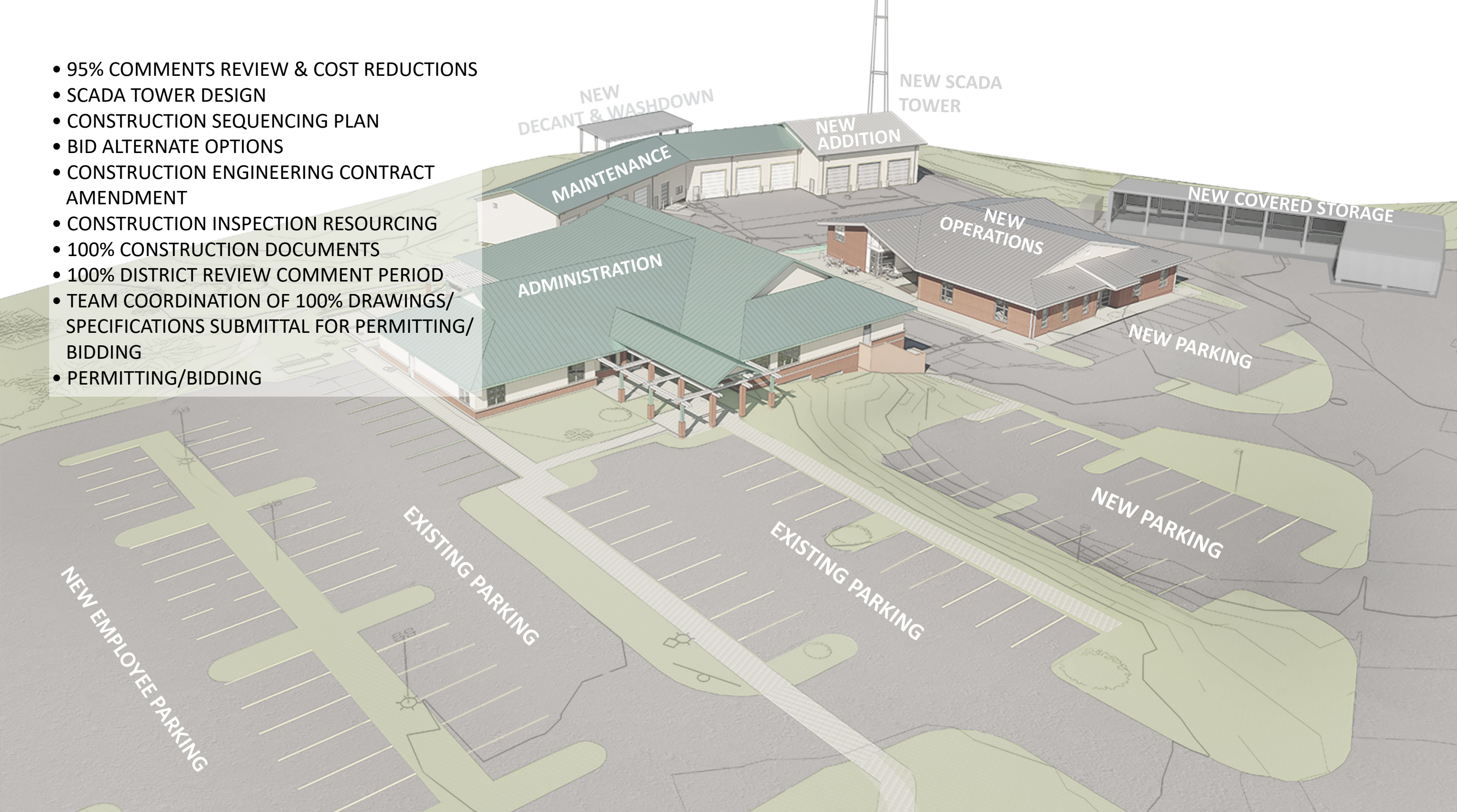
DISTRICT CAMPUS IMPROVEMENT PHASING SCHEDULE

CLARK REGIONAL WASTEWATER DISTRICT CAMPUS





- 95% COMMENTS REVIEW & COST REDUCTIONS
- SCADA TOWER DESIGN
- CONSTRUCTION SEQUENCING PLAN
- BID ALTERNATE OPTIONS
- CONSTRUCTION ENGINEERING CONTRACT AMENDMENT
- CONSTRUCTION INSPECTION RESOURCING
- 100% CONSTRUCTION DOCUMENTS
- 100% DISTRICT REVIEW COMMENT PERIOD
- TEAM COORDINATION OF 100% DRAWINGS/SPECIFICATIONS SUBMITTAL FOR PERMITTING/BIDDING
- PERMITTING/BIDDING



## NEXT STEPS

CLARK REGIONAL WASTEWATER DISTRICT CAMPUS