

Connections

July/August 2018



Survey says: District's rates are among state's lowest

We're proud the rates our customers pay are very competitive in Clark County and throughout the state.

How low? The Washington Department of Ecology published a statewide survey of monthly utility rates late last year. Crunch the numbers and you'll find the District's low base rate of \$38 occupies the 20th percentile. That means the District's rates are lower than 80 percent of others in the state.

When we say the District is committed to low rates for customers, results like this are what we mean. But they also raise questions.

What about rates in Ridgefield?

In the same survey, the current Ridgefield rate of \$60.50 ranks at the 64th percentile statewide. That's nine percent below the average rate for utilities in western Washington (\$66.32), and the same rate as when Ridgefield joined the District in 2014. The District promised and has delivered overall rate stability in Ridgefield.

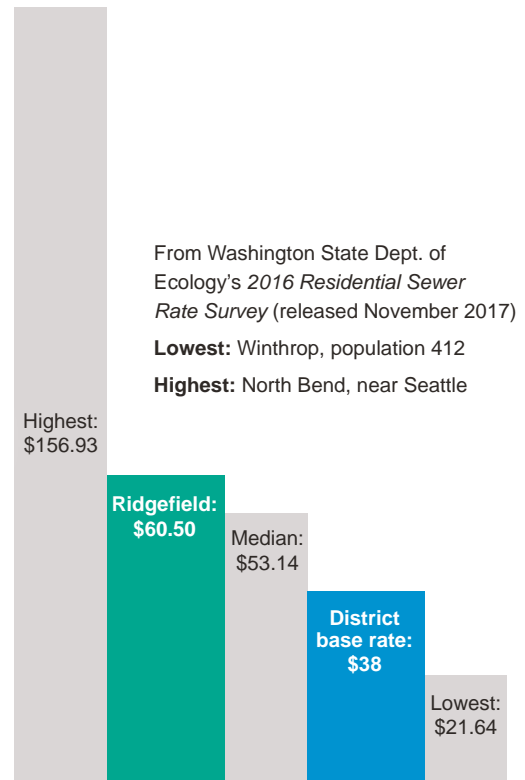
Customers in the Ridgefield service area pay a surcharge to cover the costs of connecting to the regional system. As the community grows, the surcharge gets smaller — currently down to \$17, from the original \$19 of four years ago.

What about rates in the future?

Inevitably, costs have increased and will continue to increase with inflation — and modest increases will be necessary, as with prices for everything. Over the next 20 years, we'll also need to invest in the regional treatment system to make sure it stays ahead of the increasing demand for our current and future customers. (Watch for more information in the next edition.) Over the long run, the District will continue to provide reliable service and customers will continue to benefit from some of the lowest and most stable rates in the state.

We'll announce 2019 rates later this year, but you can get involved before then. Public meetings about budget planning start in mid-October. (Visit the News & Highlights page of the District website for details.) Come ask questions and tell us what you think! Your input can help us continue to bring you the highest quality service with only modestly increasing, predictable rates.

The published survey compiled household rates for 1,000 cubic feet per month — about 250 gallons of water consumption per day. We calculated percentile rankings from the results on the State's website: bit.ly/WashingtonSewerSurvey



Calendar of Events

July

4

Ridgefield
Parade

August

7

Ridgefield National
Night Out

Come see Frog and the F.O.G.G. at an upcoming event! Ask a question at our booth and you might see the answer in an upcoming edition of Connections.

Hours of Operation

Monday-Friday
8 a.m. – 5 p.m.
Closed Weekends
& Holidays

Emergency?

Call 24/7:
360-750-5876

Commissioners

Norm Harker
Denny Kiggins
Neil Kimsey

General Manager

John M. Peterson

Visit us online at www.CRWWD.com



SEWER SCIENCE WITH FROG AND THE F.O.G.G. PRESENTS...

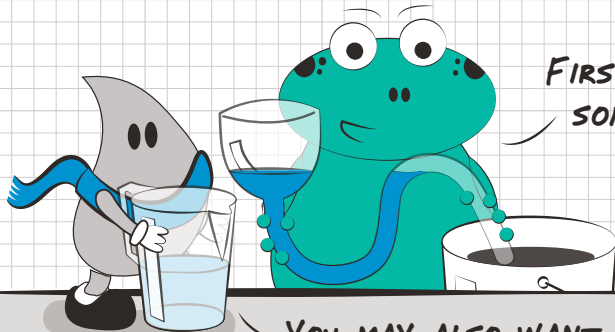
MAKE A MODEL TOILET!

OF COURSE, YOU KNEW THAT ... RIGHT?



THEY'RE IN YOUR HOME, AT SCHOOL, AT RESTAURANTS AND STORES ... AND THEY ALL CONNECT TO THE SEWER SYSTEM! IF YOU'VE EVER WONDERED HOW THEY WORK, WHY NOT MAKE A TOILET OF YOUR OWN?

JUST TO BE CLEAR: THIS IS ABOUT MAKING A TOILET MODEL. SO ... ONLY PUT WATER IN IT!! AND IF YOU NEED TO, ASK A GROWN-UP FOR HELP!



FIRST, YOU'LL NEED SOME SUPPLIES ...

A BUCKET
(OR SOMETHING TO CATCH WATER IN.)

A TOILET BOWL
(A FUNNEL OR THE TOP OF A 2-LITER BOTTLE WORKS WELL. BE CAREFUL WITH SCISSORS!)

SOME FLEXIBLE TUBE
(CLEAR IS BETTER.)

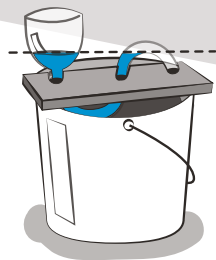
FLEXIBLE TAPE

(LIKE DUCT TAPE - TO ATTACH THE "BOWL" TO THE TUBE.)

WATER

BUILD IT!

1. CONNECT THE TUBING TO THE FUNNEL WITH SOME TAPE.
2. HOLD THE TUBING IN A SIDEWAYS-S SHAPE WITH THE FUNNEL IN ONE HAND, AND THE HIGHEST PART OF THE S A LITTLE HIGHER THAN HALFWAY UP THE FUNNEL.
3. HOLD THE TUBING'S OPEN END LOWER THAN THE FUNNEL.
4. LASTLY, HAVE A HELPER POUR WATER INTO THE FUNNEL UNTIL THE WATER ALMOST STARTS TO FLOW OUT OF THE TUBING.



(YOU CAN ASK A GROWN-UP TO DRILL SOME HOLES IN A BOARD TO MAKE A FRAME.)

FLUSH IT!

NOW THAT YOUR TOILET IS READY, HAVE YOUR HELPER POUR EVEN MORE WATER INTO THE FUNNEL ALL AT ONCE, LIKE FLUSHING THE TOILET. **WHAT HAPPENS?**

USUALLY, WHEN WATER ENTERS THE FUNNEL, GRAVITY PULLS IT DOWN AND IT PUSHES THE WATER THAT WAS ALREADY IN THE TUBE THROUGH THE S-CURVE AND OUT THE END.

IF YOU POUR ENOUGH WATER AT ONCE, THE WATER SHOULD CONTINUE TO FLOW, PULLING THE WATER OUT OF THE FUNNEL. THIS IS CALLED **SIPHONING**, LIKE WHEN YOU SIP THROUGH A STRAW. THIS PART OF YOUR TOILET IS CALLED AN S-SIPHON.

AFTER YOU "FLUSH", YOU SHOULD STILL SEE SOME WATER IN THE S-BEND AND THE LOWER PART OF THE FUNNEL. IN A REAL TOILET, THAT WATER IS SUPER IMPORTANT BECAUSE IT KEEPS SMELLS FROM COMING UP THROUGH THE TOILET AND INTO YOUR HOUSE.

WHAT IF YOU BLOCK THE TUBING WITH YOUR FINGER? THE FLUSHED WATER OVERFLOWS THE FUNNEL. THAT MAKES A BIG MESS, WHICH IS ONE REASON NOT TO FLUSH WIPES OR ANYTHING EXCEPT TOILET PAPER.

AND IN A REAL TOILET, WHAT HAPPENS TO THE WATER THAT GETS PUSHED THROUGH TO THE SEWER SYSTEM? LIKE FROG AND THE F.O.G.G, IT STARTS AN EPIC JOURNEY...

NOW THAT YOU'VE MADE YOUR MODEL TOILET, YOU CAN ALSO GIVE IT A GO IN MINECRAFT. HERE'S A VIDEO THAT SHOWS YOU HOW: [BIT.LY/MINECRAFT-TOILET](http://bit.ly/minecraft-toilet)

... AND A GOOD REASON TO DO THIS EXPERIMENT OUTSIDE!

