

Allen Creek West
See Fig. 3-602

Bos See 3-6.

Seventh-Day Adventist
See Fig. 3-608

Pioneer Corridor
See Fig. 3-606

Pioneer Canyon
See Fig. 3-601

Union Ridge
See Fig. 3-607

P:\Mapping\Maps_Generated\Clark Regional Wastewater District\15-10377_01\004 - Basin Delineation\maps\Mapbook1B_Mapbook - 11x17.mxd 4/6/2018 ctolelino



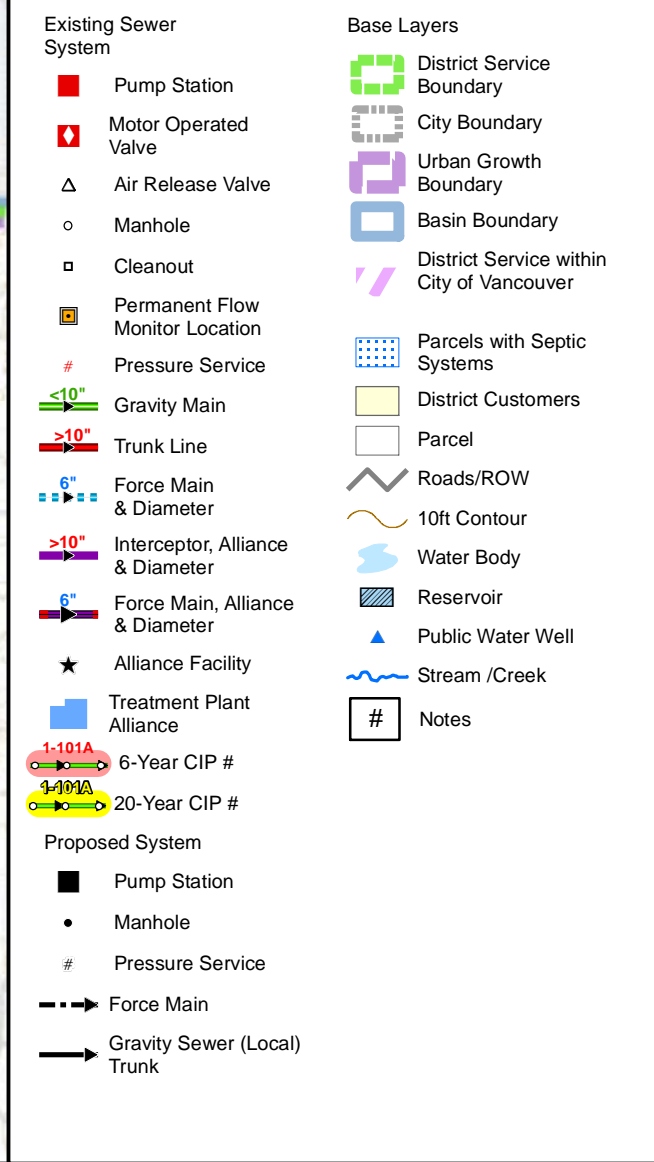
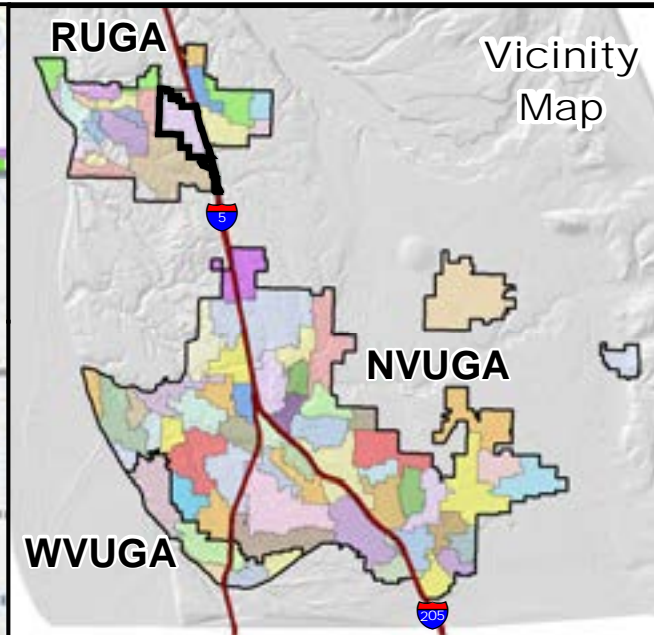
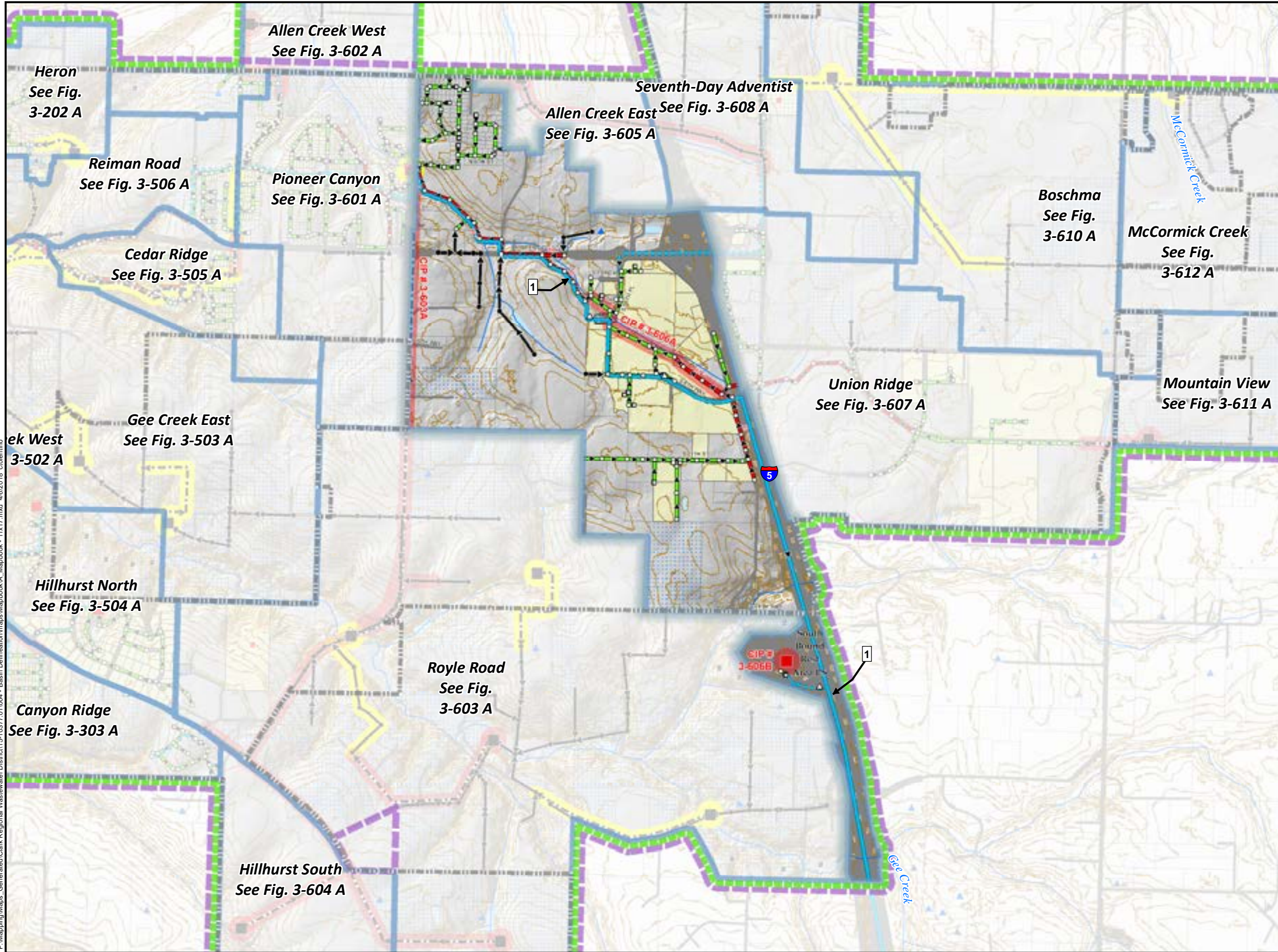
Critical Areas: Clark County 2014
Zoning: Clark County 2015. GIS Based data: Clark County
Data sources supplied may not reflect current or actual conditions. This map is a geographic representation based on information available. It does not represent survey data. No warranty is made concerning the accuracy, currency, or completeness of data depicted on this map. Indicated scale when printed in 11x17 format.

Scale:
1 inch = 500 feet



Basin 3-605
Allen Creek East Basin
Comprehensive General Sewer Plan
Clark Regional Wastewater District
December 2017

Figure
3-605 B



P:\Mapping\Maps_Generated\Clark Regional Wastewater District\15-10377\01\004 - Basin Delineation\Mapa\Mapbook\A_Mapbook - 11x17.mxd 4/6/2018 cdelencio



Sewer System & Basins: Clark Regional Wastewater District
 GIS Base data: Clark County
 Data sources supplied may not reflect current or actual conditions. This map is a geographic representation based on information available. It does not represent survey data. No warranty is made concerning the accuracy, currency, or completeness of data depicted on this map.
 Indicated scale when printed in 11x17 format.

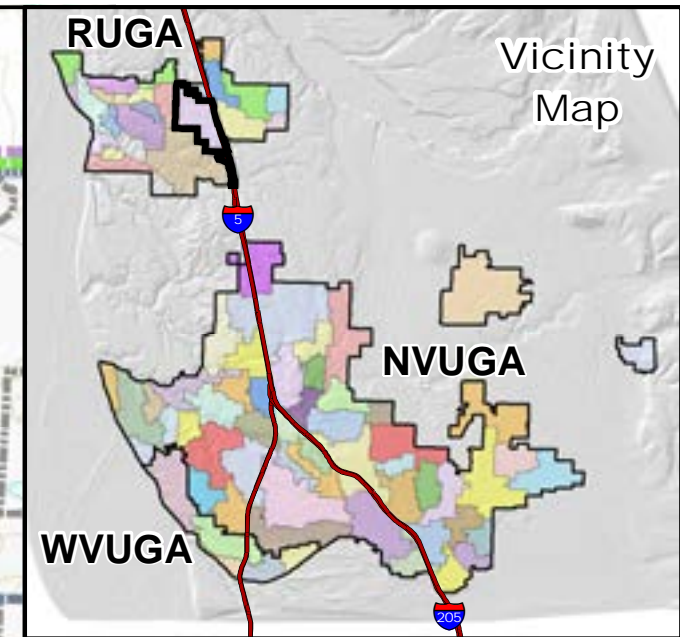
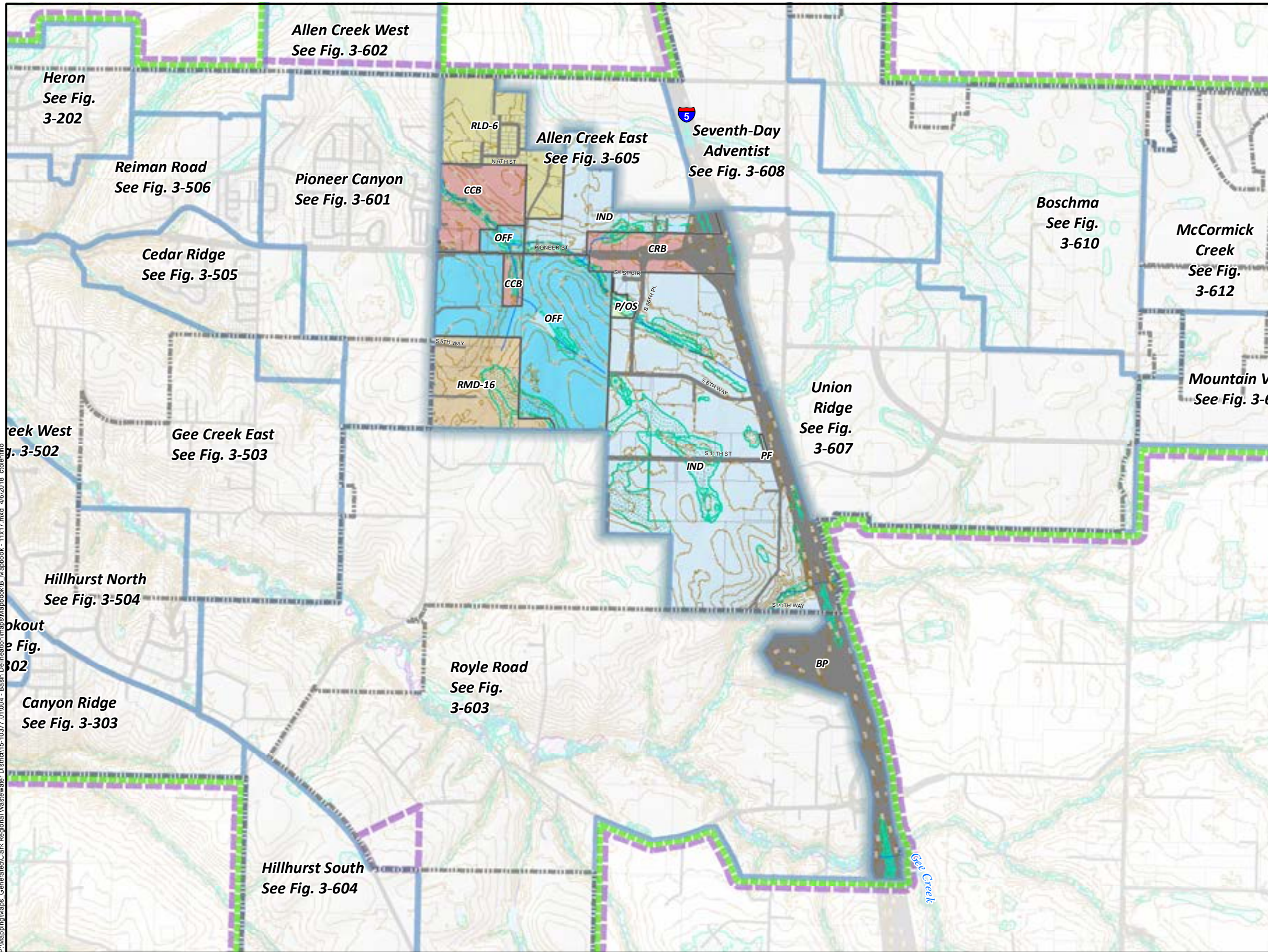
Scale:
 1 inch = 1,500 feet

Notes:
 1) 20" FM Not in Service and 14" Active FM.



Mini-Basin 3-606
 Pioneer Corridor
 Comprehensive General Sewer Plan
 Clark Regional Wastewater District
 December 2017

Figure
 3-606 A



Legend

- | | |
|-----------------------|---------------------------------------------|
| Critical Areas | Zoning |
| 500 Year Flood | Business park (BP, OFF) |
| Floodway | Community commercial (C-3, C2, CC, CCB) |
| Wetlands | Light industrial (IL, ML, LI, IND, LI/EC) |
| Base Layers | Low density residential-6du/ac (R-6, RLD-6) |
| District Service Area | Parks/Open Space (P/OS) |
| City Boundary | Public facilities (PF, IP, UP) |
| Urban Growth Area | Regional commercial (RC, CRB) |
| Basin Boundary | Residential (R16, AR-16, MDR-16) |
| Parcels | Zoning Outline |
| Roads/ROW | |
| 10ft Contours | |
| Water Bodies | |
| Steams/Creeks | |

P:\Mapping\Maps_Generated\Clark Regional Wastewater District\15-10377_01004 - Basin Delineation\maps\MapbookB_Mapbook - 11x17.mxd 4/6/2018 ctolelino



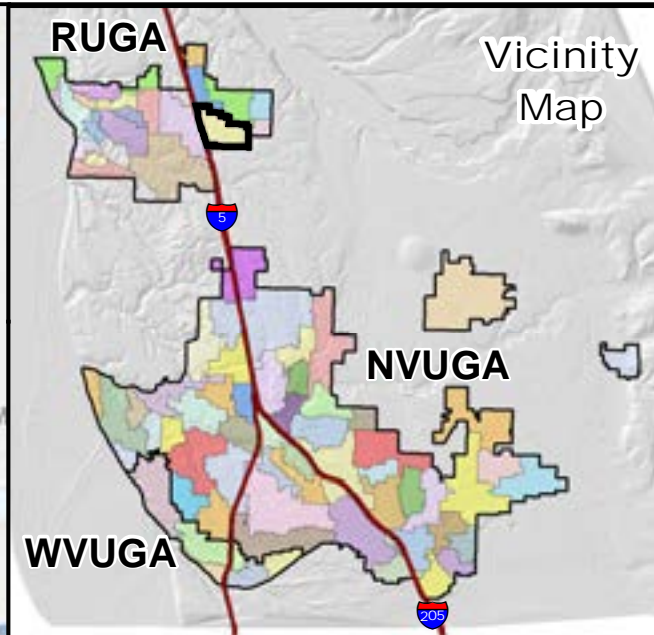
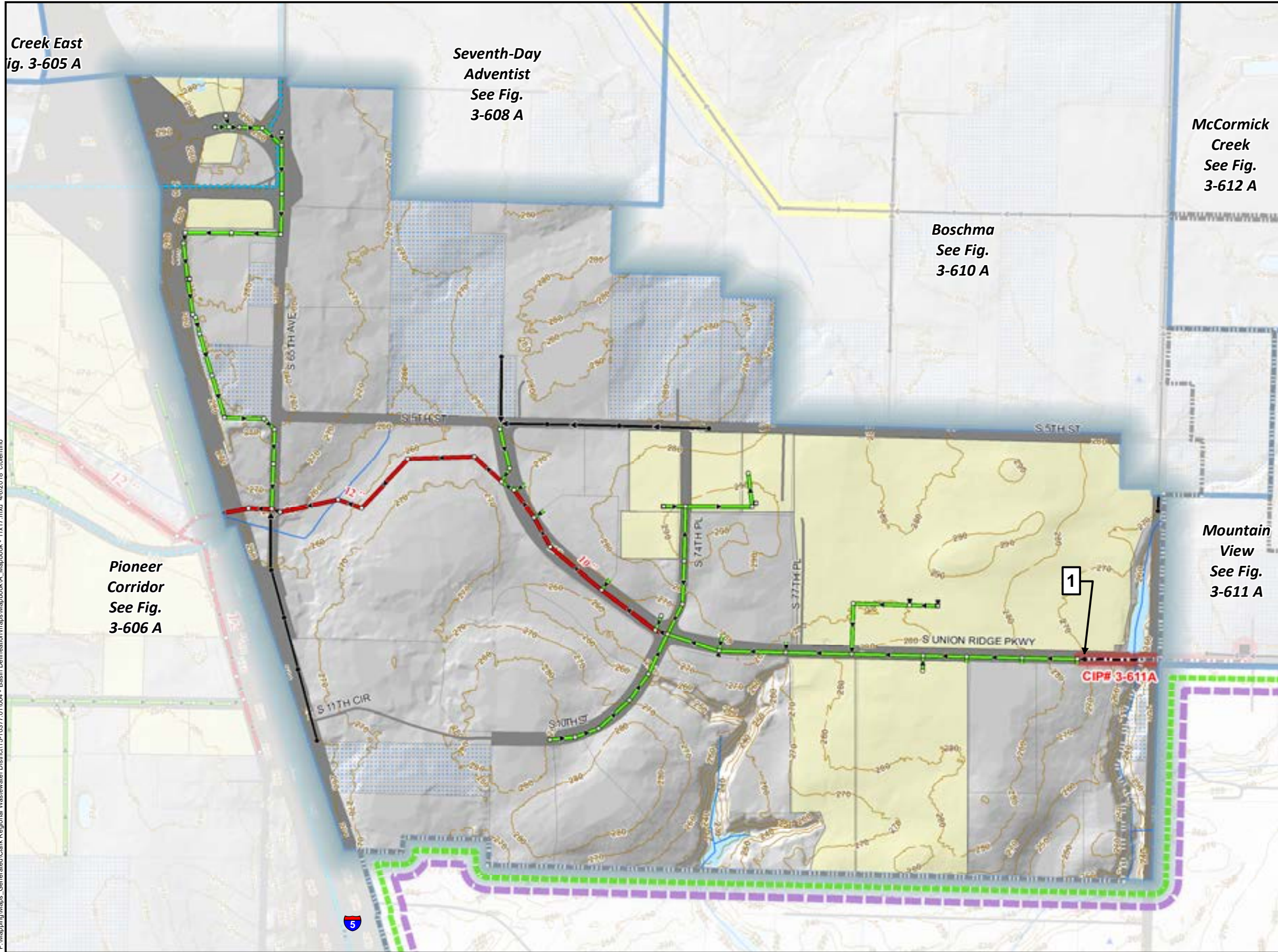
Critical Areas: Clark County 2014
 Zoning: Clark County 2015. GIS Based data: Clark County
 Data sources supplied may not reflect current or actual conditions. This map is a geographic representation based on information available. It does not represent survey data. No warranty is made concerning the accuracy, currency, or completeness of data depicted on this map. Indicated scale when printed in 11x17 format.

Scale:
1 inch = 1,500 feet



Basin 3-606
 Pioneer Corridor Basin
 Comprehensive General Sewer Plan
 Clark Regional Wastewater District
 December 2017

Figure
3-606 B



<p>Existing Sewer System</p> <ul style="list-style-type: none"> ■ Pump Station ◻ Motor Operated Valve △ Air Release Valve ○ Manhole □ Cleanout ■ Permanent Flow Monitor Location # Pressure Service — <10" Gravity Main — >10" Trunk Line — 6" Force Main & Diameter — >10" Interceptor, Alliance & Diameter — 6" Force Main, Alliance & Diameter ★ Alliance Facility ■ Treatment Plant Alliance — 1-101A 6-Year CIP # — 1-101A 20-Year CIP # <p>Proposed System</p> <ul style="list-style-type: none"> ■ Pump Station • Manhole # Pressure Service --- Force Main → Gravity Sewer (Local) Trunk 	<p>Base Layers</p> <ul style="list-style-type: none"> ■ District Service Boundary ■ City Boundary ■ Urban Growth Boundary ■ Basin Boundary / / District Service within City of Vancouver ■ Parcels with Septic Systems ■ District Customers ■ Parcel — Roads/ROW — 10ft Contour — Water Body ■ Reservoir ▲ Public Water Well ~ Stream /Creek # Notes
---------------------------------------------------------------------------------------------------------------------------------------------------------------------------------------------------------------------------------------------------------------------------------------------------------------------------------------------------------------------------------------------------------------------------------------------------------------------------------------------------------------------------------------------------------------------------------------------------------------------------------------------------------------------------------------------------------------------------------------------------------------------------------------------------------------------------------------------------------------------------------------------------------------------------------------------------------------------------------------------------------------------------------------------------------------------------------------------------------------------------------------------------------------------------------------------------------------------------------------------------------------	-----------------------------------------------------------------------------------------------------------------------------------------------------------------------------------------------------------------------------------------------------------------------------------------------------------------------------------------------------------------------------------------------------------------------------------------------------------------------------------------------------------------------------------------------------------------------------------------------------------------------------------------------------------------------------------------------------------------------------------------------------------------------------------------------------------------------------------------------------------------------------------------------------------------------------------------------------------------------------------------------------------------------------------------------------------------------------------------------------------------------------------------------------------------------------------------------------------------------------------------------------------------------------------------------------------------------------------------------

P:\Mapping\Maps_Generated\Clark Regional Wastewater District\15-10377-01\004 - Basin Delineation\Mapa\Mapbook\VA_Mapbook - 11x17.mxd 4/6/2018 cblentino



Sewer System & Basins: Clark Regional Wastewater District
 GIS Base data: Clark County
 Data sources supplied may not reflect current or actual conditions. This map is a geographic representation based on information available. It does not represent survey data. No warranty is made concerning the accuracy, currency, or completeness of data depicted on this map.
 Indicated scale when printed in 11x17 format.

Scale:
 1 inch = 600 feet

Notes:
 1) Discharge in Union Ridge Parkway from CIP# 3-611A (Urban Downs PS).



Mini-Basin 3-607
 Union Ridge
 Comprehensive General Sewer Plan
 Clark Regional Wastewater District
 December 2017

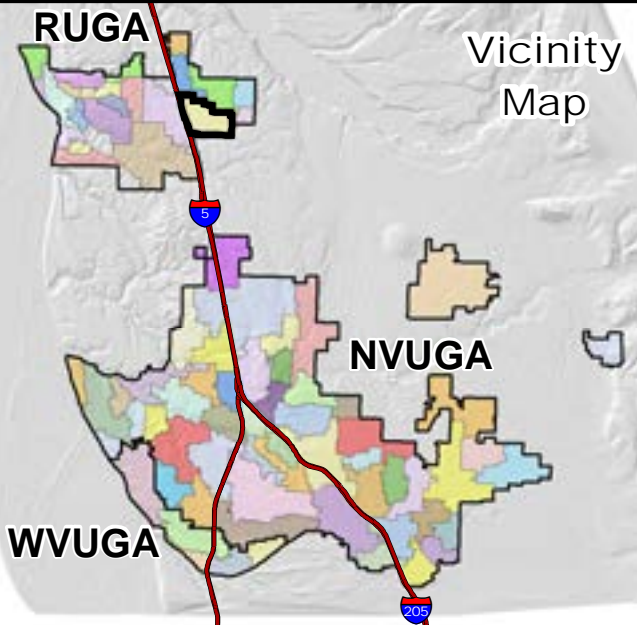
Figure
 3-607 A

n Creek East
Fig. 3-605

Seventh-Day
Adventist
See Fig. 3-608

Boschma
See Fig.
3-610

McCormick
See Fig. 3-



Vicinity
Map

P:\Mapping\Maps_Generated\Clark Regional Wastewater District\15-10377_01004 - Basin Delineation\maps\MapbookB_Mapbook - 11x17.mxd 4/6/2018 ctolelino

Pioneer
Corridor
See Fig. 3-606

Mountain
See Fig. 3-

Legend

- | | |
|-----------------------|------------------------------------------|
| Critical Areas | Zoning |
| 500 Year Flood | Business park (BP, OFF) |
| Floodway | Light industrial (IL, ML, LI, IND, L/EC) |
| Wetlands | Public facilities (PF, IP, UP) |
| Base Layers | Regional commercial (RC, CRB) |
| District Service Area | Zoning Outline |
| City Boundary | |
| Urban Growth Area | |
| Basin Boundary | |
| Parcels | |
| Roads/ROW | |
| 10ft Contours | |
| Water Bodies | |
| Steams/Creeks | |

Fig. 3-

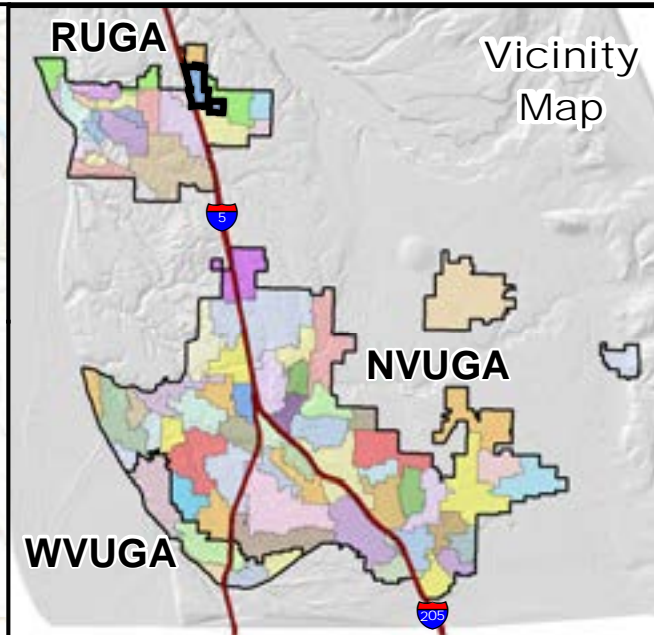
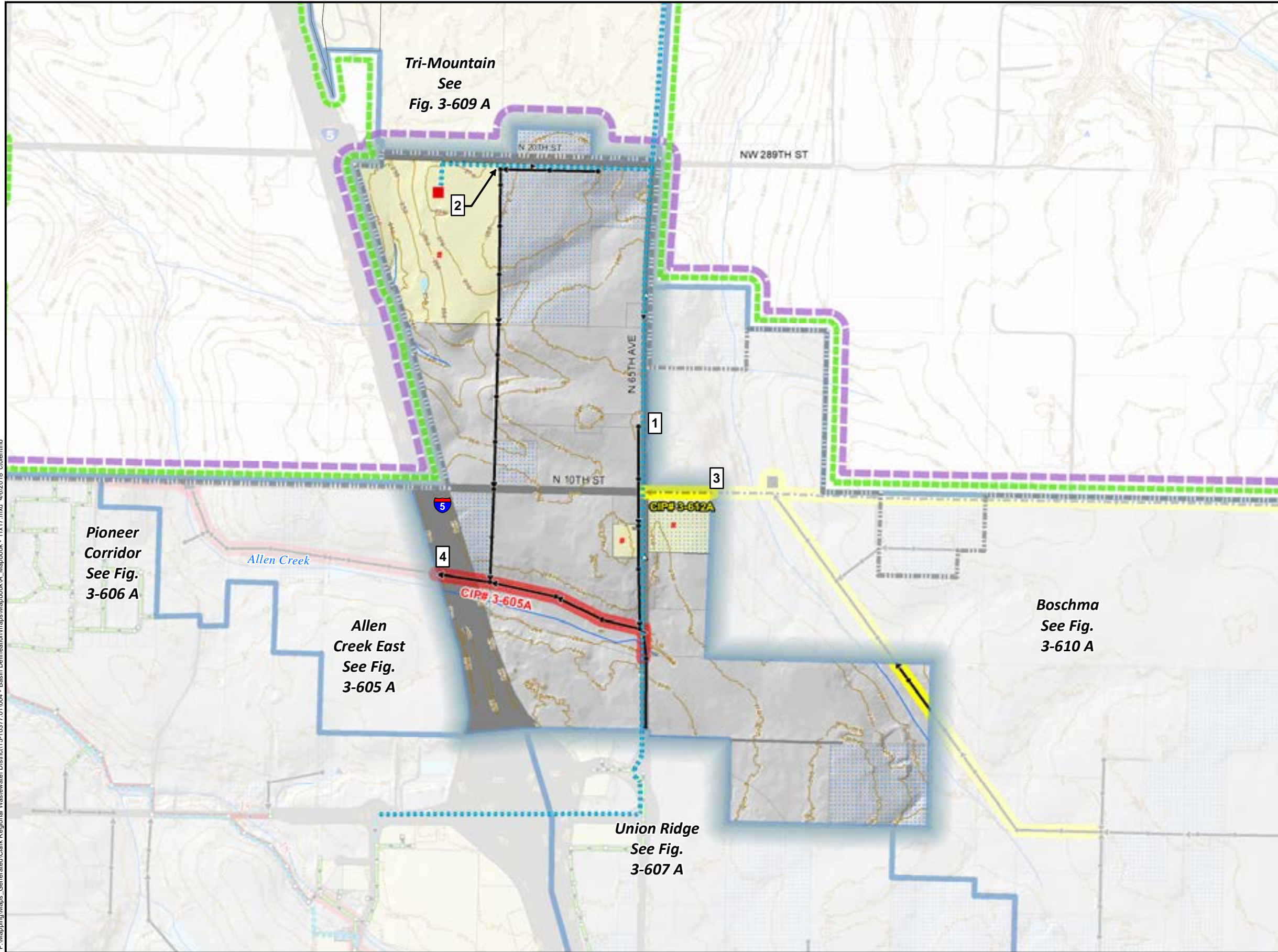
Critical Areas: Clark County 2014
Zoning: Clark County 2015. GIS Based data: Clark County
Data sources supplied may not reflect current or actual conditions. This map is a geographic representation based on information available. It does not represent survey data. No warranty is made concerning the accuracy, currency, or completeness of data depicted on this map. Indicated scale when printed in 11x17 format.

Scale:
1 inch = 600 feet



Basin 3-607
Union Ridge Basin
Comprehensive General Sewer Plan
Clark Regional Wastewater District
December 2017

Figure
3-607 B



Existing Sewer System		Base Layers	
■	Pump Station	□	District Service Boundary
◻	Motor Operated Valve	□	City Boundary
△	Air Release Valve	□	Urban Growth Boundary
○	Manhole	□	Basin Boundary
□	Cleanout	□	District Service within City of Vancouver
■	Permanent Flow Monitor Location	□	Parcels with Septic Systems
#	Pressure Service	□	District Customers
—>	Gravity Main	□	Parcel
—>	Trunk Line	—	Roads/ROW
—>	Force Main & Diameter	—	10ft Contour
—>	Interceptor, Alliance & Diameter	—	Water Body
—>	Force Main, Alliance & Diameter	▨	Reservoir
★	Alliance Facility	▲	Public Water Well
■	Treatment Plant Alliance	—	Stream /Creek
1-101A	6-Year CIP #	#	Notes
1-101A	20-Year CIP #		
Proposed System			
■	Pump Station		
●	Manhole		
#	Pressure Service		
—>	Force Main		
—>	Gravity Sewer (Local) Trunk		

P:\Mapping\Maps_Generated\Clark Regional Wastewater District\15-10377\01\004 - Basin Delineation\Mapa\Mapbook_VA_Mapbook - 11x17.mxd 4/6/2018 cblentino



Sewer System & Basins: Clark Regional Wastewater District
 GIS Base data: Clark County
 Data sources supplied may not reflect current or actual conditions. This map is a geographic representation based on information available. It does not represent survey data. No warranty is made concerning the accuracy, currency, or completeness of data depicted on this map.
 Indicated scale when printed in 11x17 format.

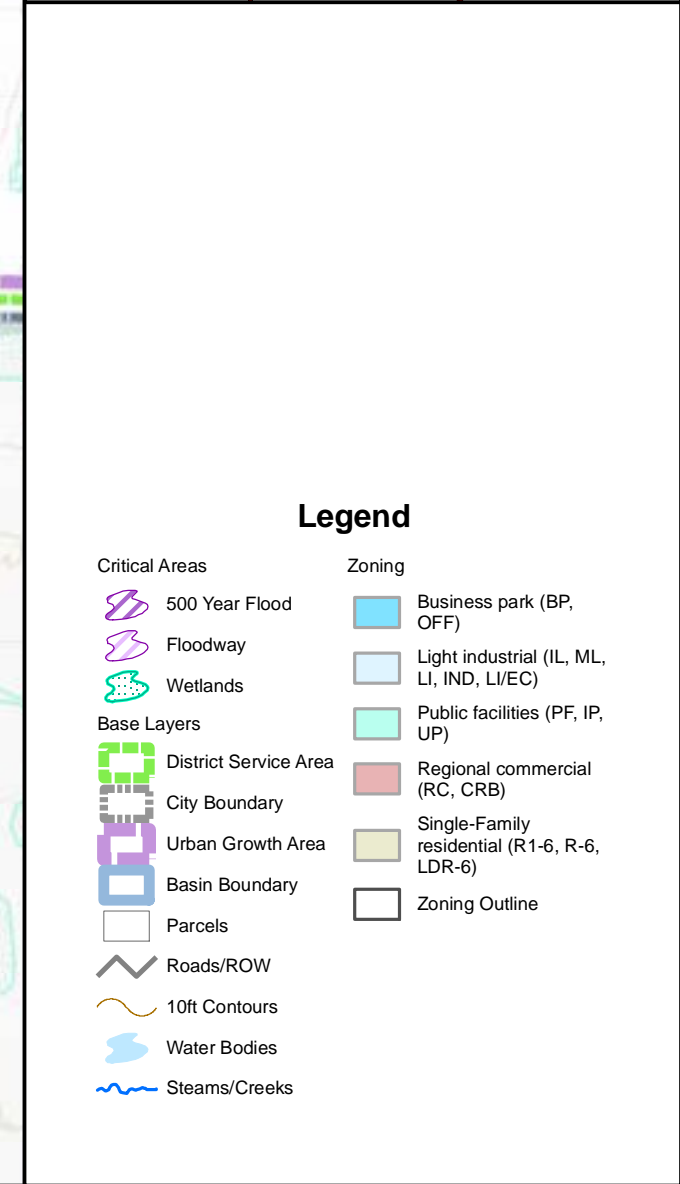
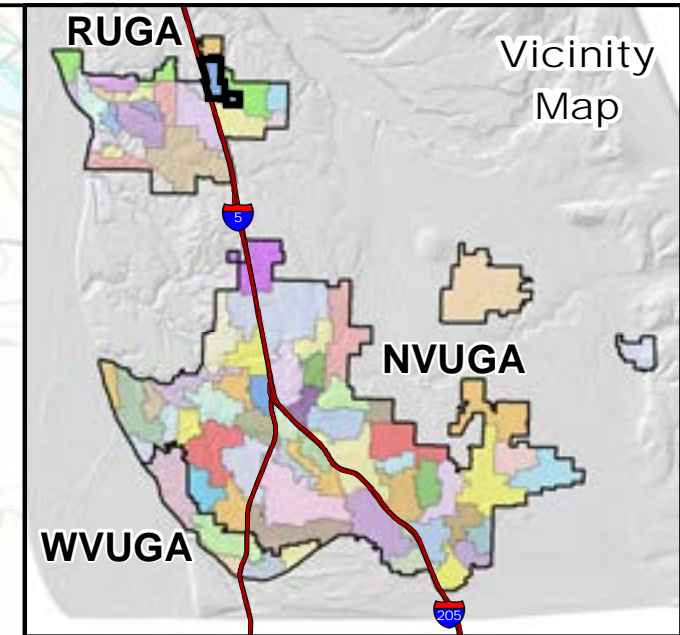
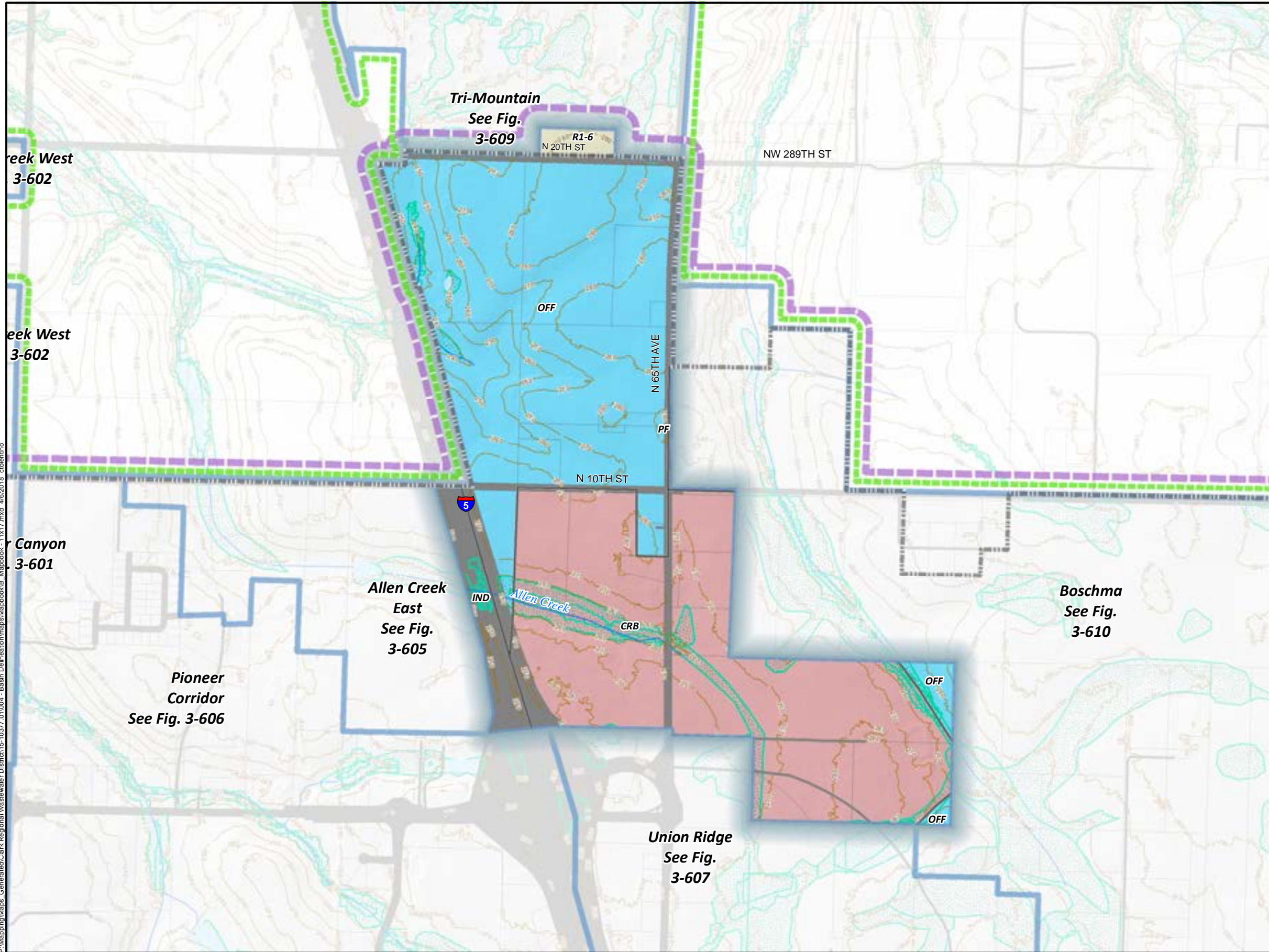
Scale:
 1 inch = 800 feet

- Notes:
- 1) Divert 4" Force Main (Tri-Mtn PS) to Trunk Sewer.
 - 2) Divert Pressure service to Gravity.
 - 3) CIP# 3-612A from McCormick Creek PS (aka Walker-Roher).
 - 4) Trunk continues as CIP# 3-605A in Mini-Basin 3-605.



Mini-Basin 3-608
 Seventh-Day Adventist
 Comprehensive General Sewer Plan
 Clark Regional Wastewater District
 December 2017

Figure
 3-608 A



P:\Mapping\Maps_Generated\Clark Regional Wastewater District\15-10377_01004 - Basin Delineation\maps\Mapbook\B_Mapbook - 11x17.mxd 4/6/2018 ctolelino



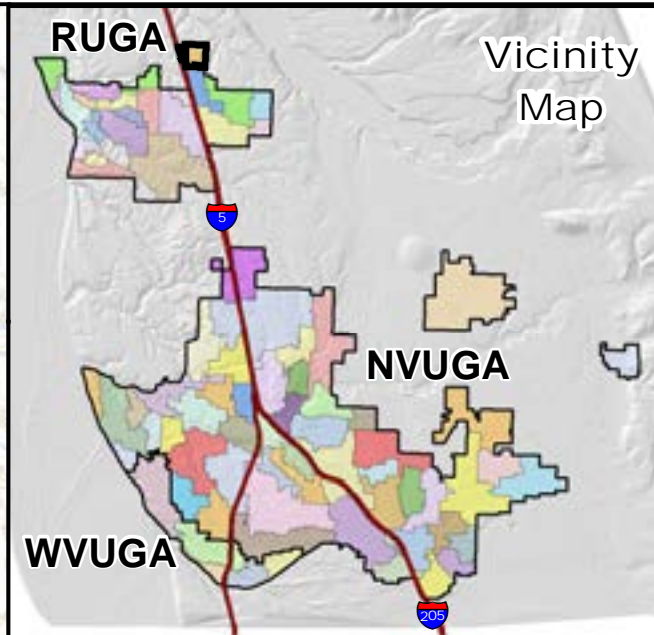
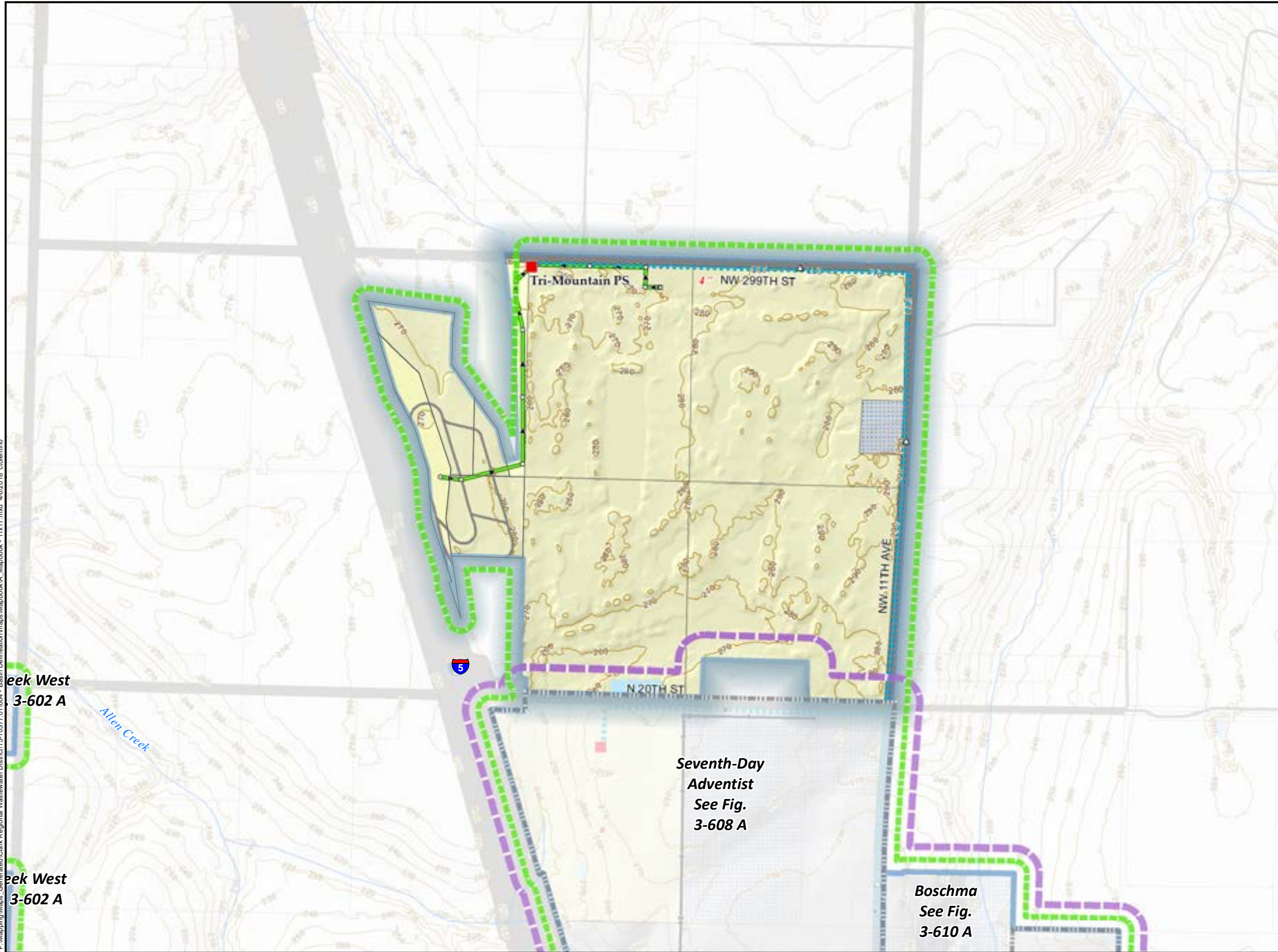
Critical Areas: Clark County 2014
 Zoning: Clark County 2015. GIS Based data: Clark County
 Data sources supplied may not reflect current or actual conditions. This map is a geographic representation based on information available. It does not represent survey data. No warranty is made concerning the accuracy, currency, or completeness of data depicted on this map. Indicated scale when printed in 11x17 format.

Scale:
1 inch = 800 feet



Basin 3-608
 Seventh-Day Adventist Basin
 Comprehensive General Sewer Plan
 Clark Regional Wastewater District
 December 2017

Figure
3-608 B



Existing Sewer System		Base Layers	
	Pump Station		District Service Boundary
	Motor Operated Valve		City Boundary
	Air Release Valve		Urban Growth Boundary
	Manhole		Basin Boundary
	Cleanout		District Service within City of Vancouver
	Permanent Flow Monitor Location		Parcels with Septic Systems
	Pressure Service		District Customers
	Gravity Main		Parcel
	Trunk Line		Roads/ROW
	Force Main & Diameter		10ft Contour
	Interceptor, Alliance & Diameter		Water Body
	Force Main, Alliance & Diameter		Reservoir
	Alliance Facility		Public Water Well
	Treatment Plant Alliance		Stream /Creek
	6-Year CIP #		Notes
	20-Year CIP #		
Proposed System			
	Pump Station		
	Manhole		
	Pressure Service		
	Force Main		
	Gravity Sewer (Local) Trunk		

Peak West
3-602 A

Peak West
3-602 A

Seventh-Day
Adventist
See Fig.
3-608 A

Boschma
See Fig.
3-610 A



Sewer System & Basins: Clark Regional Wastewater District
GIS Base data: Clark County
Data sources supplied may not reflect current or actual conditions. This map is a geographic representation based on information available. It does not represent survey data. No warranty is made concerning the accuracy, currency, or completeness of data depicted on this map. Indicated scale when printed in 11x17 format.

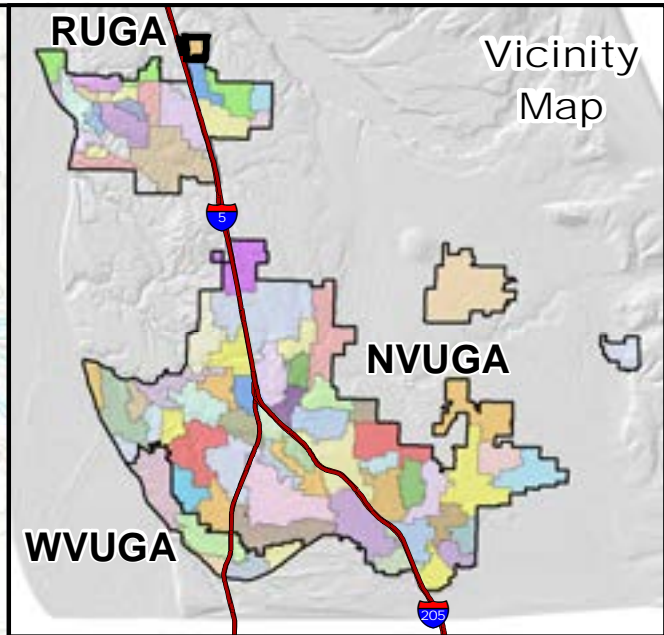
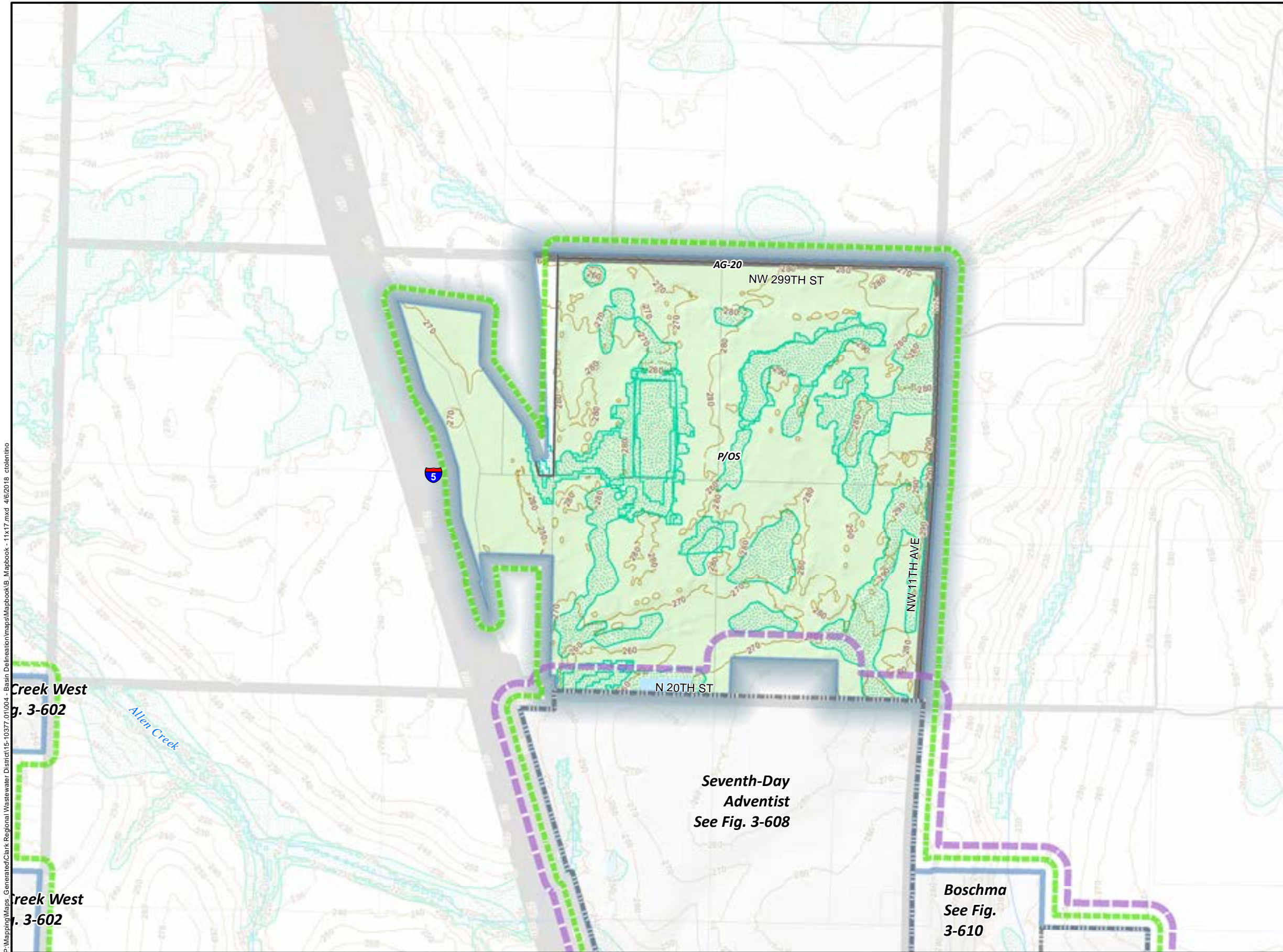
Scale:
1 inch = 600 feet

Notes:



Mini-Basin 3-609
Tri-Mountain
Comprehensive General Sewer Plan
Clark Regional Wastewater District
December 2017

Figure
3-609 A



Creek West
Fig. 3-602

Creek West
Fig. 3-602

Seventh-Day
Adventist
See Fig. 3-608

Boschma
See Fig.
3-610

Legend

- | | |
|-----------------------|-------------------------|
| Critical Areas | Zoning |
| 500 Year Flood | Agriculture-20 (AG-20) |
| Floodway | Parks/Open Space (P/OS) |
| Wetlands | Zoning Outline |
| Base Layers | |
| District Service Area | |
| City Boundary | |
| Urban Growth Area | |
| Basin Boundary | |
| Parcels | |
| Roads/ROW | |
| 10ft Contours | |
| Water Bodies | |
| Steams/Creeks | |



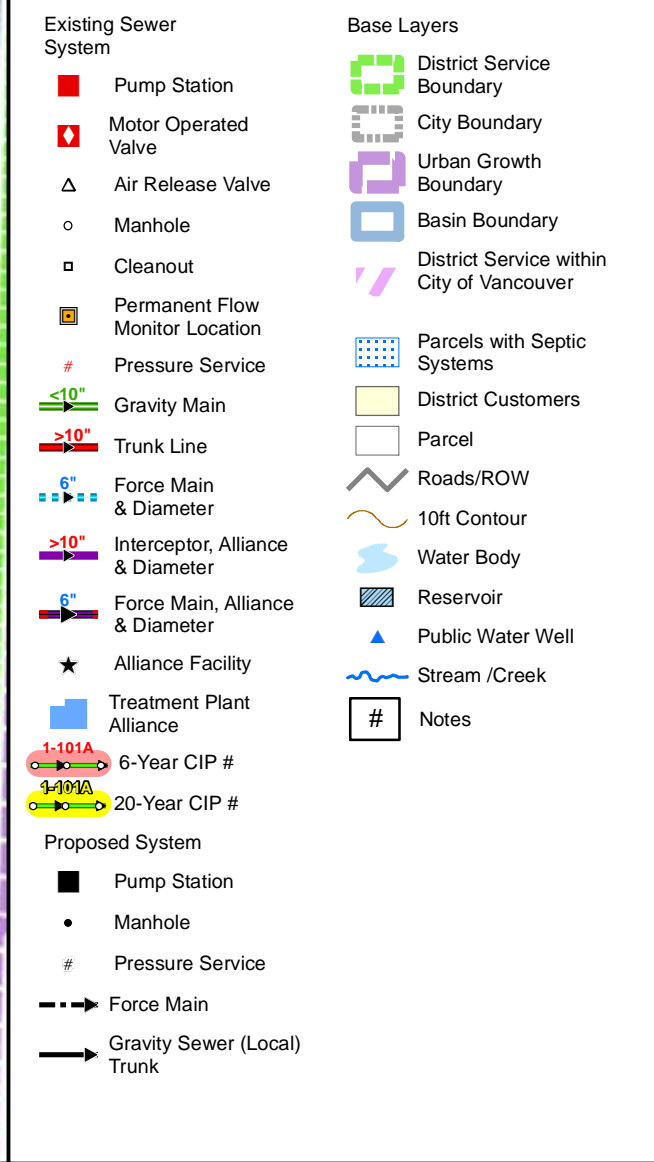
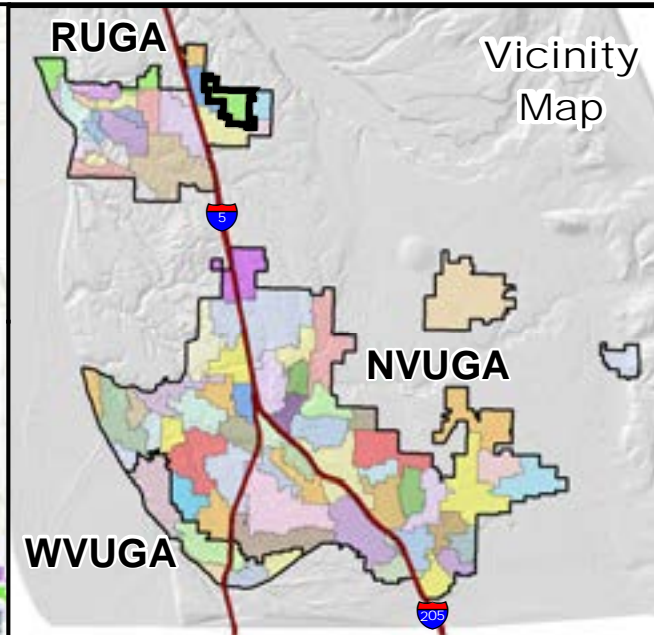
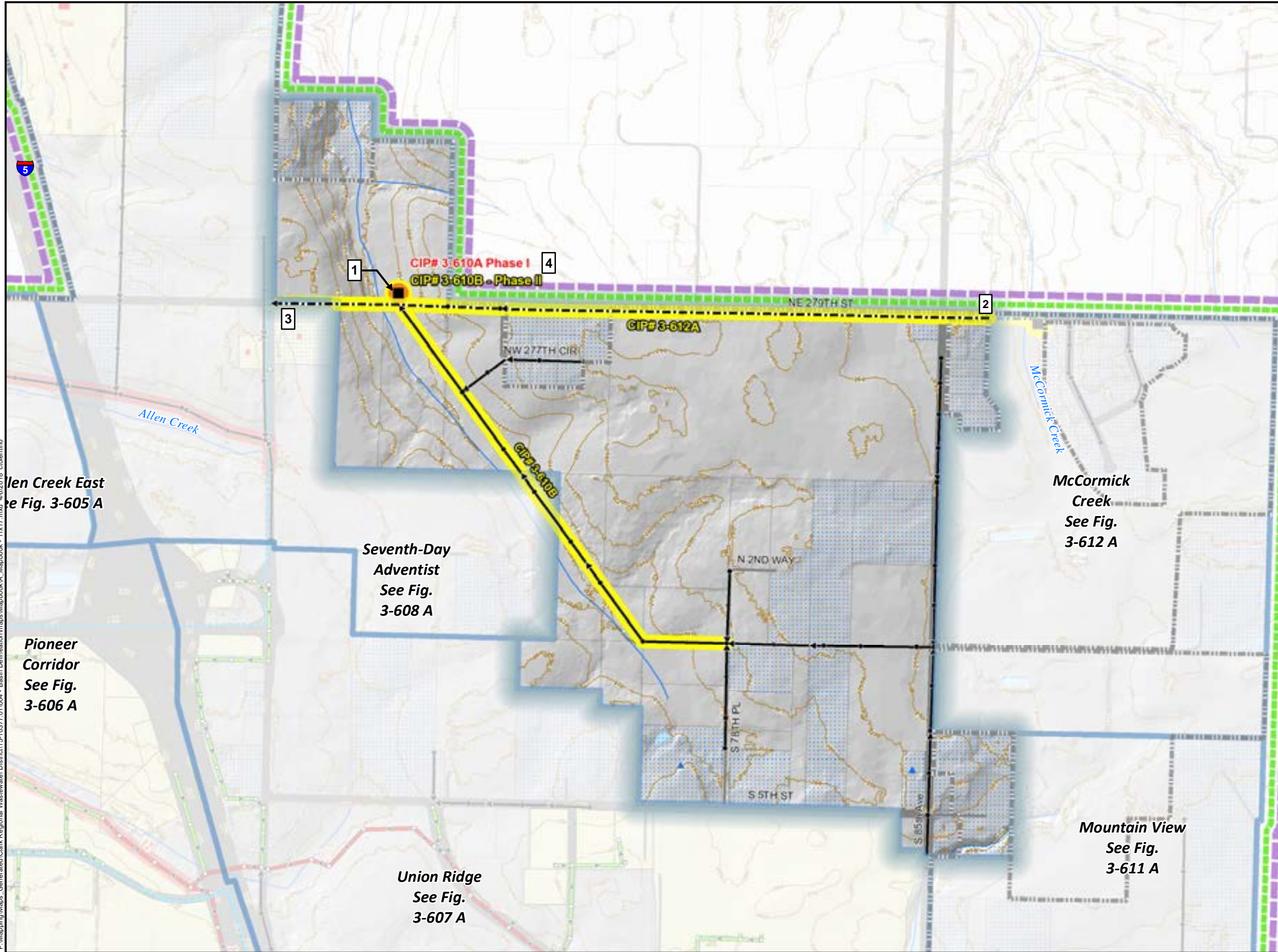
Critical Areas: Clark County 2014
 Zoning: Clark County 2015. GIS Based data: Clark County
 Data sources supplied may not reflect current or actual conditions. This map is a geographic representation based on information available. It does not represent survey data. No warranty is made concerning the accuracy, currency, or completeness of data depicted on this map. Indicated scale when printed in 11x17 format.

Scale:
1 inch = 600 feet



Basin 3-609
 Tri-Mountain Basin
 Comprehensive General Sewer Plan
 Clark Regional Wastewater District
 December 2017

Figure
3-609 B



P:\Mapping\Maps_Generated\Clark Regional Wastewater District\15-10377\01\004 - Basin Delineation\Mapbook\VA_Mapbook - 11x17.mxd 4/6/2018 cblentino



Sewer System & Basins: Clark Regional Wastewater District
 GIS Base data: Clark County
 Data sources supplied may not reflect current or actual conditions. This map is a geographic representation based on information available. It does not represent survey data. No warranty is made concerning the accuracy, currency, or completeness of data depicted on this map.
 Indicated scale when printed in 11x17 format.

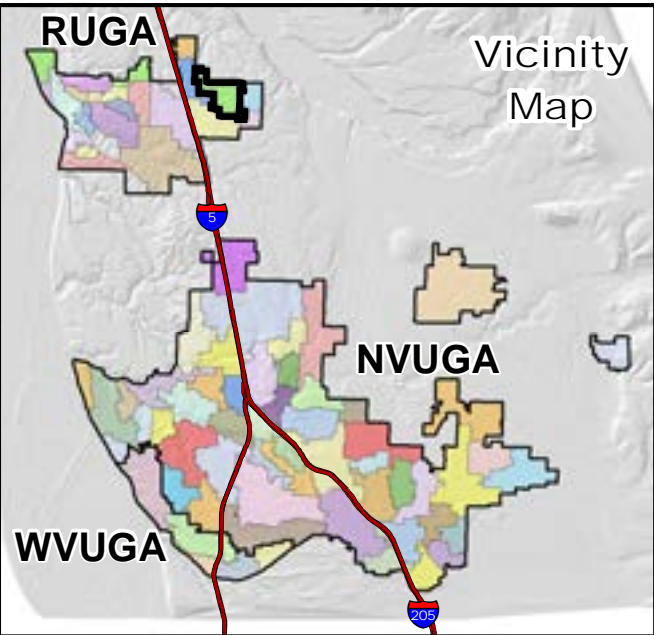
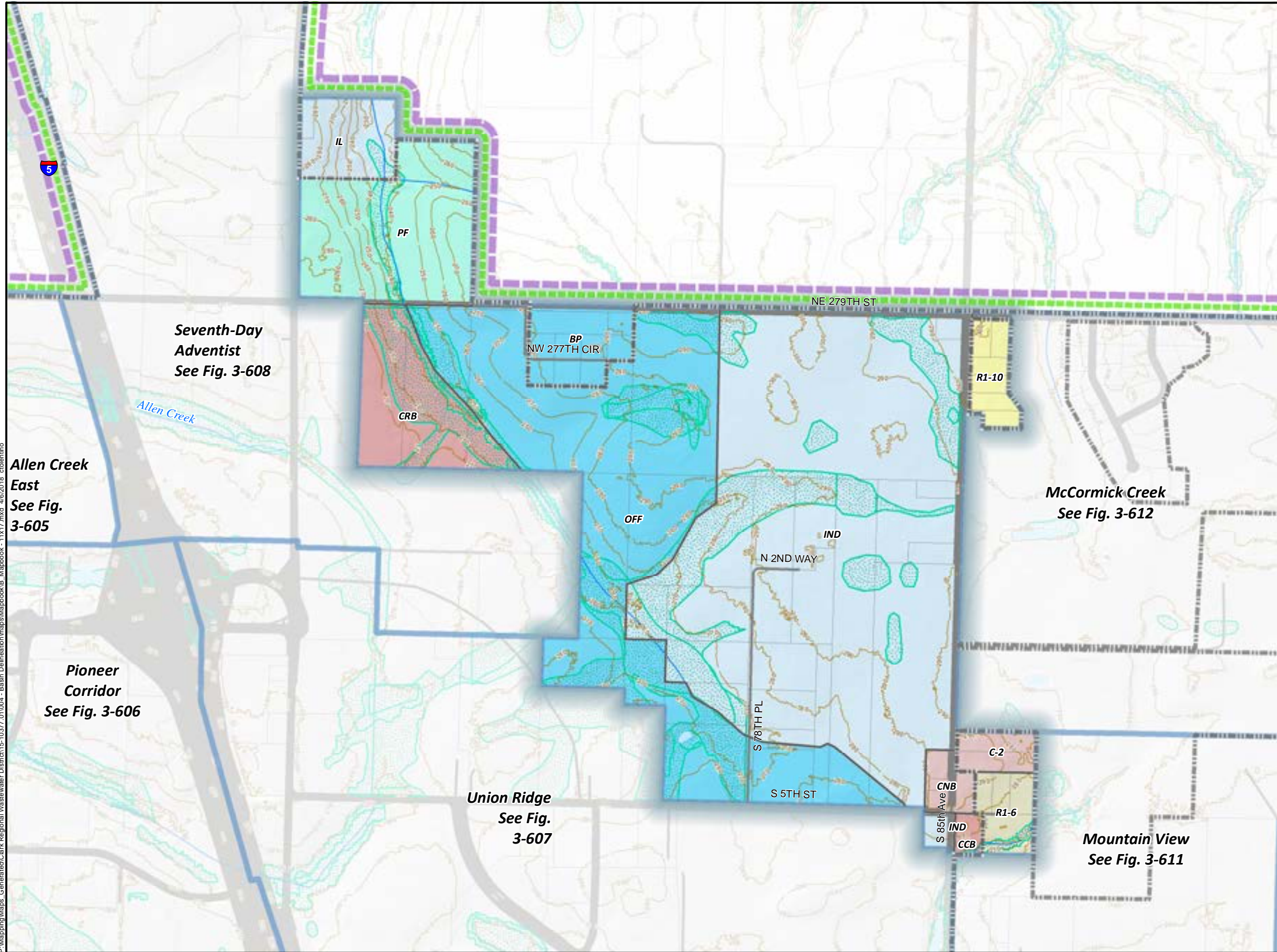
Scale:
1 inch = 800 feet

- Notes:
- 1) Easement Acquired for Future Pump Station - 2016.
 - 2) FM from McCormick Creek (aka Walker-Roher PS) PS.
 - 3) CIP# 3-612A, FM from McCormick Creek PS (aka Walker-Roher PS) continues to Fig 3-608A.
 - 4) Boschma PS consists of 2 phases.
Phase I: initial residential PS.
Phase II: increase capacity.



Mini-Basin 3-610
 Boschma
 Comprehensive General Sewer Plan
 Clark Regional Wastewater District
 December 2017

Figure
3-610 A



Legend	
Critical Areas	Zoning
500 Year Flood	Business park (BP, OFF)
Floodway	Community commercial (C-3, C2, CC, CCB)
Wetlands	Light industrial (IL, ML, LI, IND, LI/EC)
Base Layers	Neighborhood commercial (C-2, C1, NC, CN, CNB)
District Service Area	Public facilities (PF, IP, UP)
City Boundary	Regional commercial (RC, CRB)
Urban Growth Area	Single-Family residential (R1-10, R-10, R10)
Basin Boundary	Single-Family residential (R1-6, R-6, LDR-6)
Parcels	Zoning Outline
Roads/ROW	
10ft Contours	
Water Bodies	
Steams/Creeks	

P:\Mapping\Maps_Generated\Clark Regional Wastewater District\15-10377_01004 - Basin Delineation\maps\Mapbook - 11x17.mxd 4/6/2018 ctoletrino



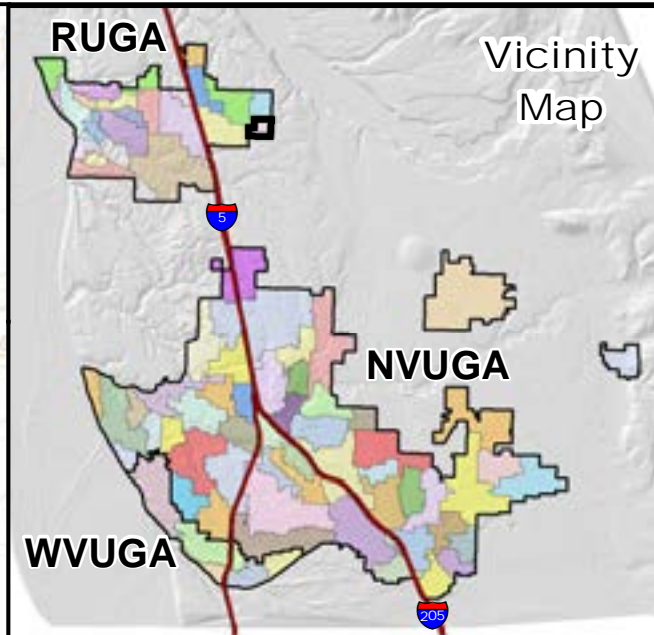
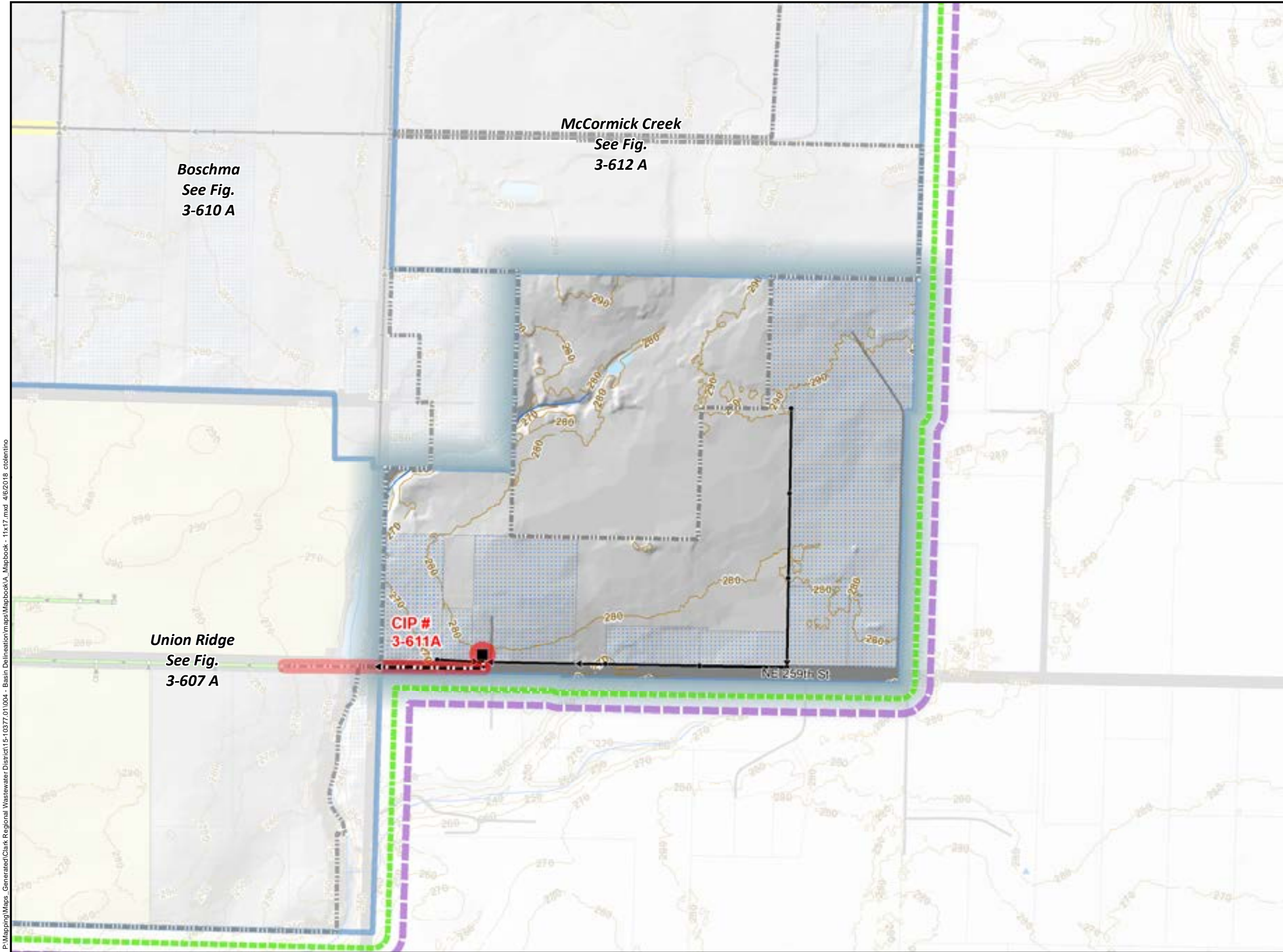
Critical Areas: Clark County 2014
 Zoning: Clark County 2015. GIS Based data: Clark County
 Data sources supplied may not reflect current or actual conditions. This map is a geographic representation based on information available. It does not represent survey data. No warranty is made concerning the accuracy, currency, or completeness of data depicted on this map. Indicated scale when printed in 11x17 format.

Scale:
1 inch = 800 feet



Basin 3-610
 Boschma Basin
 Comprehensive General Sewer Plan
 Clark Regional Wastewater District
 December 2017

Figure
3-610 B



Existing Sewer System		Base Layers	
	Pump Station		District Service Boundary
	Motor Operated Valve		City Boundary
	Air Release Valve		Urban Growth Boundary
	Manhole		Basin Boundary
	Cleanout		District Service within City of Vancouver
	Permanent Flow Monitor Location		Parcels with Septic Systems
	Pressure Service		District Customers
	Gravity Main		Parcel
	Trunk Line		Roads/ROW
	Force Main & Diameter		10ft Contour
	Interceptor, Alliance & Diameter		Water Body
	Force Main, Alliance & Diameter		Reservoir
	Alliance Facility		Public Water Well
	Treatment Plant Alliance		Stream /Creek
	6-Year CIP #		Notes
	20-Year CIP #		
Proposed System			
	Pump Station		
	Manhole		
	Pressure Service		
	Force Main		
	Gravity Sewer (Local) Trunk		

P:\Mapping\Maps_Generated\Clark Regional Wastewater District\15-10377\01\004 - Basin Delineation\Mapbook\A_Mapbook - 11x17.mxd 4/6/2018 cblentino



Sewer System & Basins: Clark Regional Wastewater District
 GIS Base data: Clark County
 Data sources supplied may not reflect current or actual conditions. This map is a geographic representation based on information available. It does not represent survey data. No warranty is made concerning the accuracy, currency, or completeness of data depicted on this map.
 Indicated scale when printed in 11x17 format.

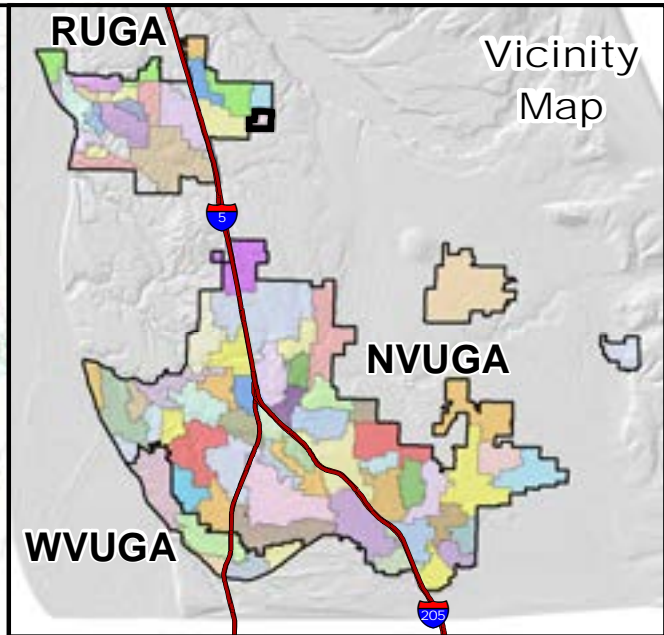
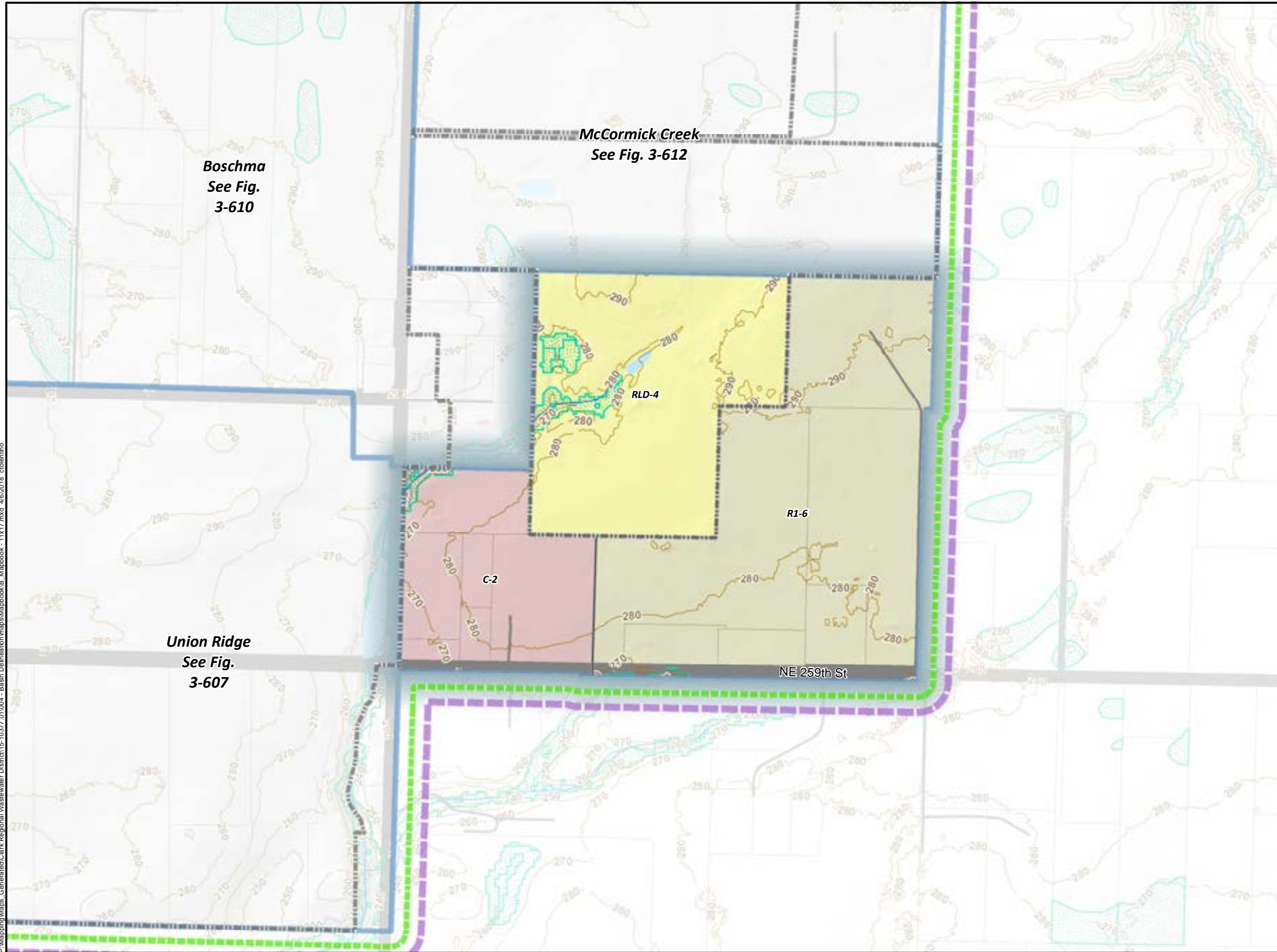
Scale:
 1 inch = 500 feet

Notes:



Mini-Basin 3-611
 Mountain View
 Comprehensive General Sewer Plan
 Clark Regional Wastewater District
 December 2017

Figure
 3-611 A



Legend

Critical Areas	Zoning
500 Year Flood	Low density residential-4du/ac (R-4, RLD-4)
Floodway	Neighborhood commercial (C-2, C1, NC, CN,CNB)
Wetlands	Single-Family residential (R1-6, R-6, LDR-6)
Base Layers	Zoning Outline
District Service Area	
City Boundary	
Urban Growth Area	
Basin Boundary	
Parcels	
Roads/ROW	
10ft Contours	
Water Bodies	
Steams/Creeks	

P:\Mapping\Maps_Generated\Clark Regional Wastewater District\15-10377_01004 - Basin Delineation\maps\Mapbook\1B_Mapbook - 11x17.mxd 4/6/2018 ctolelino



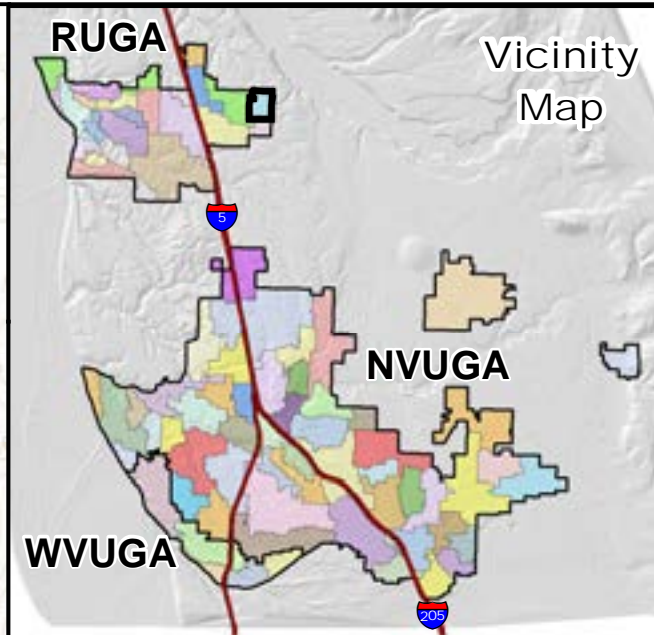
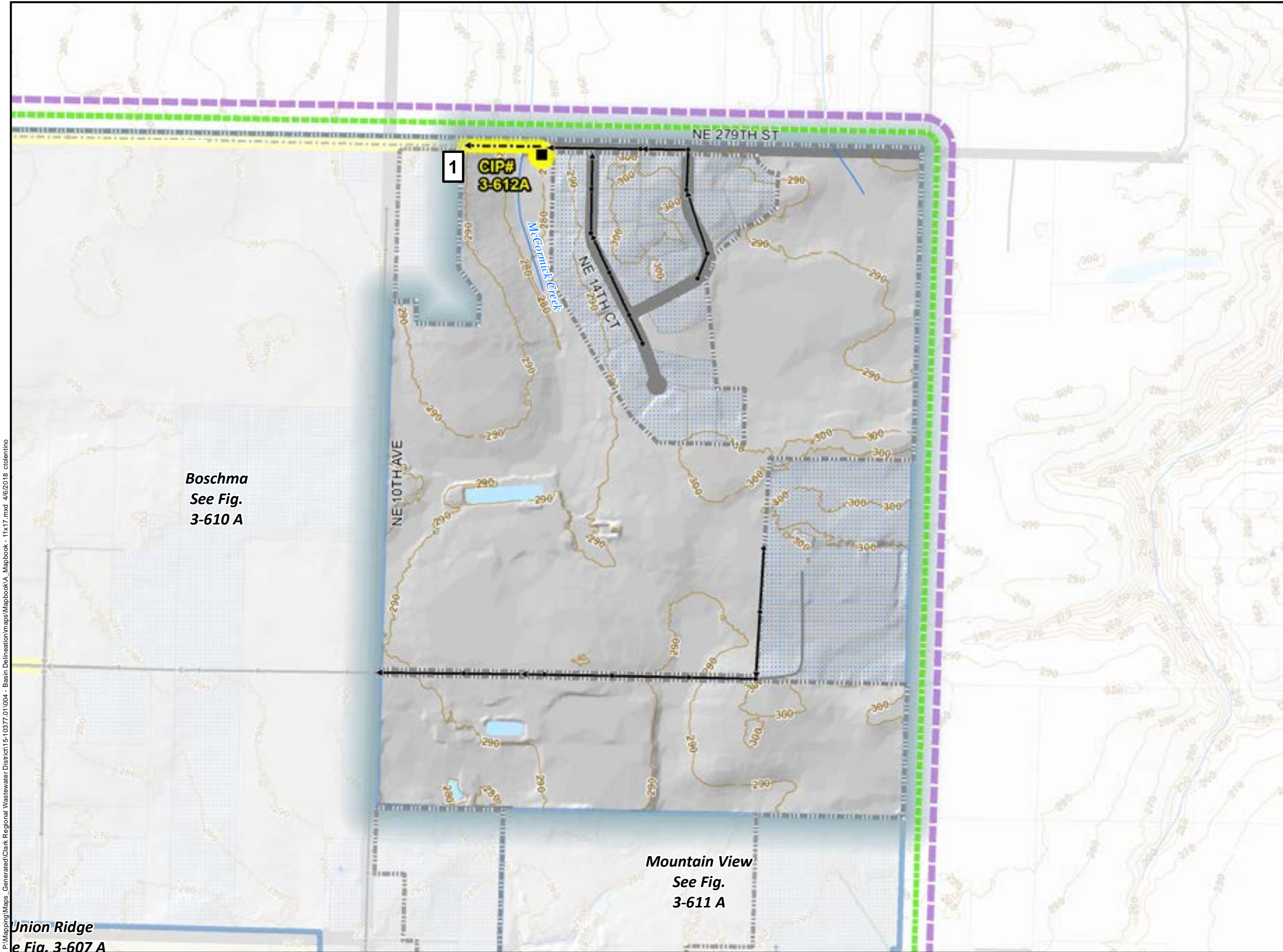
Critical Areas: Clark County 2014
 Zoning: Clark County 2015. GIS Based data: Clark County
 Data sources supplied may not reflect current or actual conditions. This map is a geographic representation based on information available. It does not represent survey data. No warranty is made concerning the accuracy, currency, or completeness of data depicted on this map. Indicated scale when printed in 11x17 format.

Scale:
1 inch = 500 feet



Basin 3-611
 Mountain View Basin
 Comprehensive General Sewer Plan
 Clark Regional Wastewater District
 December 2017

Figure
3-611 B



Existing Sewer System		Base Layers	
	Pump Station		District Service Boundary
	Motor Operated Valve		City Boundary
	Air Release Valve		Urban Growth Boundary
	Manhole		Basin Boundary
	Cleanout		District Service within City of Vancouver
	Permanent Flow Monitor Location		Parcels with Septic Systems
	Pressure Service		District Customers
	Gravity Main		Parcel
	Trunk Line		Roads/ROW
	Force Main & Diameter		10ft Contour
	Interceptor, Alliance & Diameter		Water Body
	Force Main, Alliance & Diameter		Reservoir
	Alliance Facility		Public Water Well
	Treatment Plant Alliance		Stream /Creek
	6-Year CIP #		Notes
	20-Year CIP #		
Proposed System			
	Pump Station		
	Manhole		
	Pressure Service		
	Force Main		
	Gravity Sewer (Local) Trunk		

Boschma
See Fig.
3-610 A

Mountain View
See Fig.
3-611 A

Union Ridge
See Fig. 3-607 A



Sewer System & Basins: Clark Regional Wastewater District
GIS Base data: Clark County
Data sources supplied may not reflect current or actual conditions. This map is a geographic representation based on information available. It does not represent survey data. No warranty is made concerning the accuracy, currency, or completeness of data depicted on this map.
Indicated scale when printed in 11x17 format.

Scale:
1 inch = 500 feet

Notes:

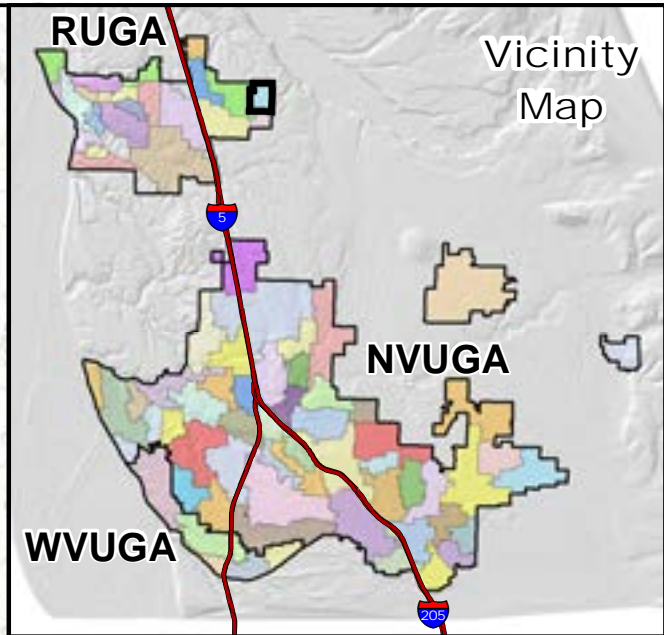
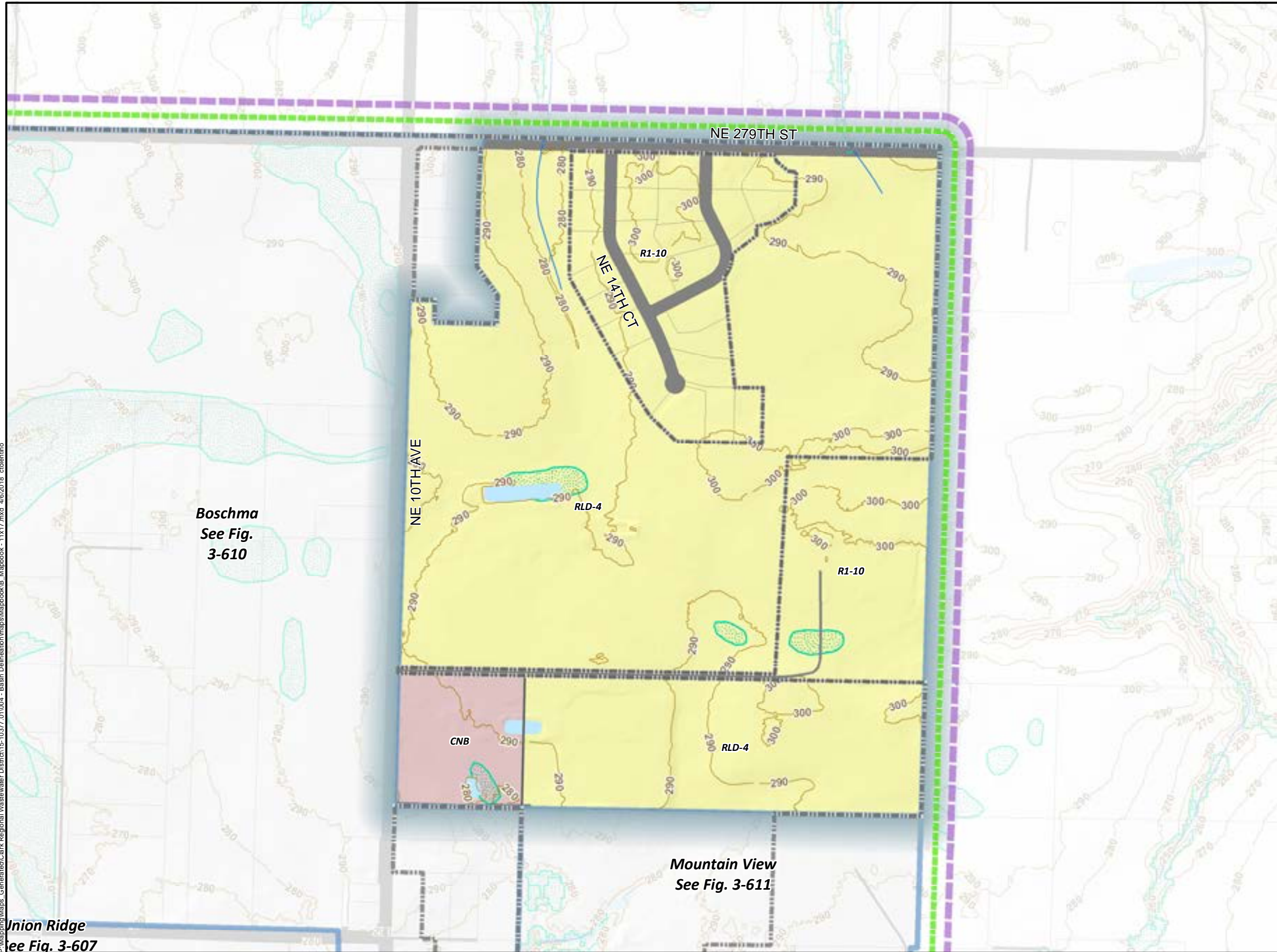
1) 4" FM continues into Mini-Basin 3-610.
See Fig 3-610A for continuation.



Mini-Basin 3-612
McCormick Creek
Comprehensive General Sewer Plan
Clark Regional Wastewater District
December 2017

Figure

3-612 A



Legend

Critical Areas	Zoning
500 Year Flood	Low density residential-4du/ac (R-4, RLD-4)
Floodway	Neighborhood commercial (C-2, C1, NC, CN,CNB)
Wetlands	Single-Family residential (R1-10, R-10, R10)
Base Layers	Zoning Outline
District Service Area	
City Boundary	
Urban Growth Area	
Basin Boundary	
Parcels	
Roads/ROW	
10ft Contours	
Water Bodies	
Steams/Creeks	

Union Ridge
See Fig. 3-607

Mountain View
See Fig. 3-611

P:\Mapping\Maps_Generated\Clark Regional Wastewater District\15-10377_01\004 - Basin Delineation\maps\Mapbook - 11x17.mxd 4/6/2018 ctoletrino



Critical Areas: Clark County 2014
Zoning: Clark County 2015. GIS Based data: Clark County
Data sources supplied may not reflect current or actual conditions. This map is a geographic representation based on information available. It does not represent survey data. No warranty is made concerning the accuracy, currency, or completeness of data depicted on this map. Indicated scale when printed in 11x17 format.

Scale:
1 inch = 500 feet



Basin 3-612
McCormick Creek Basin
Comprehensive General Sewer Plan
Clark Regional Wastewater District
December 2017

Figure
3-612 B