

# Ridgefield Service Area Capital Program Update

*Providing Customer-Focused, Professional Wastewater Services to Ridgefield*



**Ridgefield City Council Meeting  
February 12, 2015**

# Agenda

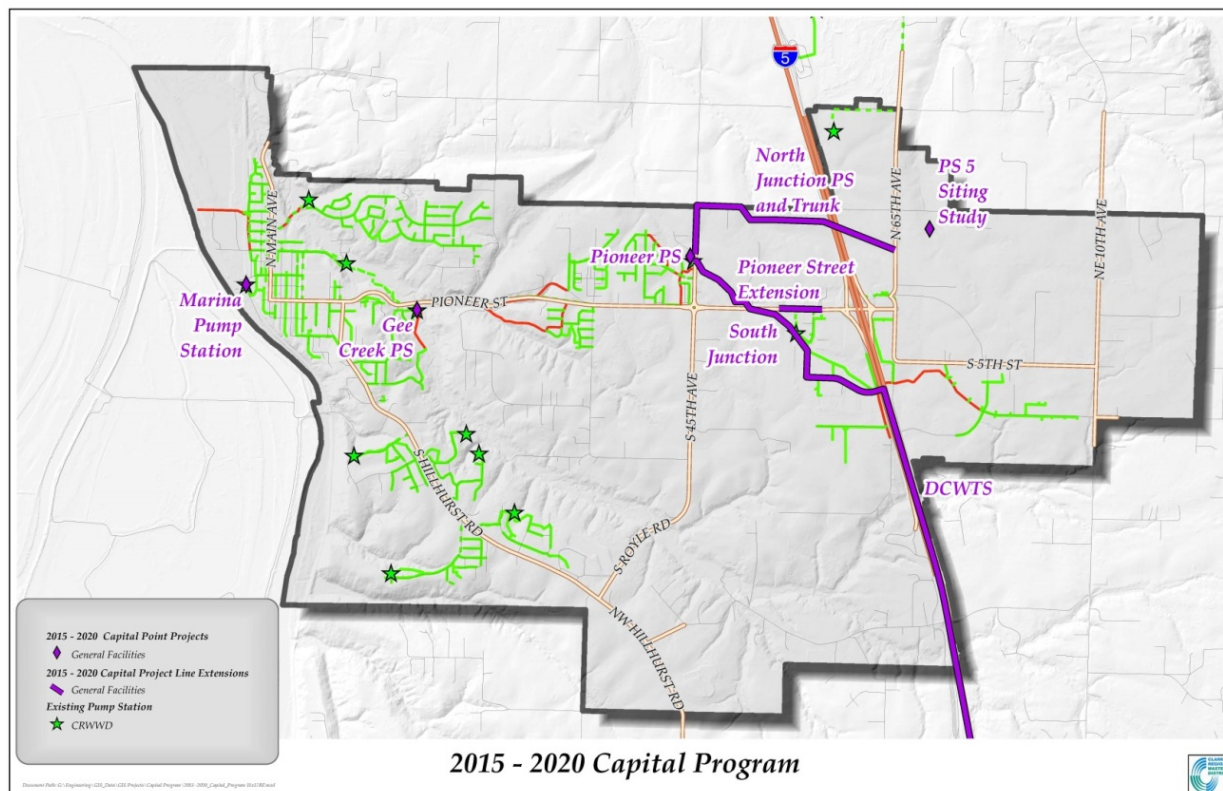
- Capital Program Update
  - Completed/In Construction
  - Design
  - Planning
- Preliminary Development Activity

# Capital Program Update

The image features a decorative graphic consisting of a blue pipe structure on the left side, with a horizontal band of blue and green wavy lines extending across the middle. The text "Capital Program Update" is centered in a dark blue font.

# Capital Program Update

- District is fully implementing capital projects in Transfer Agreement...and more



# Capital Program Update – Completed/ In Construction

- 2014 Accomplishments
  - Marina Pump Station – COMPLETED
  - South Junction Trunk/Junction Pump Station Removal – COMPLETED
  - DCWTS Phase 1 – IN CONSTRUCTION





# Capital Program Update – Design

- Pioneer Street Extension



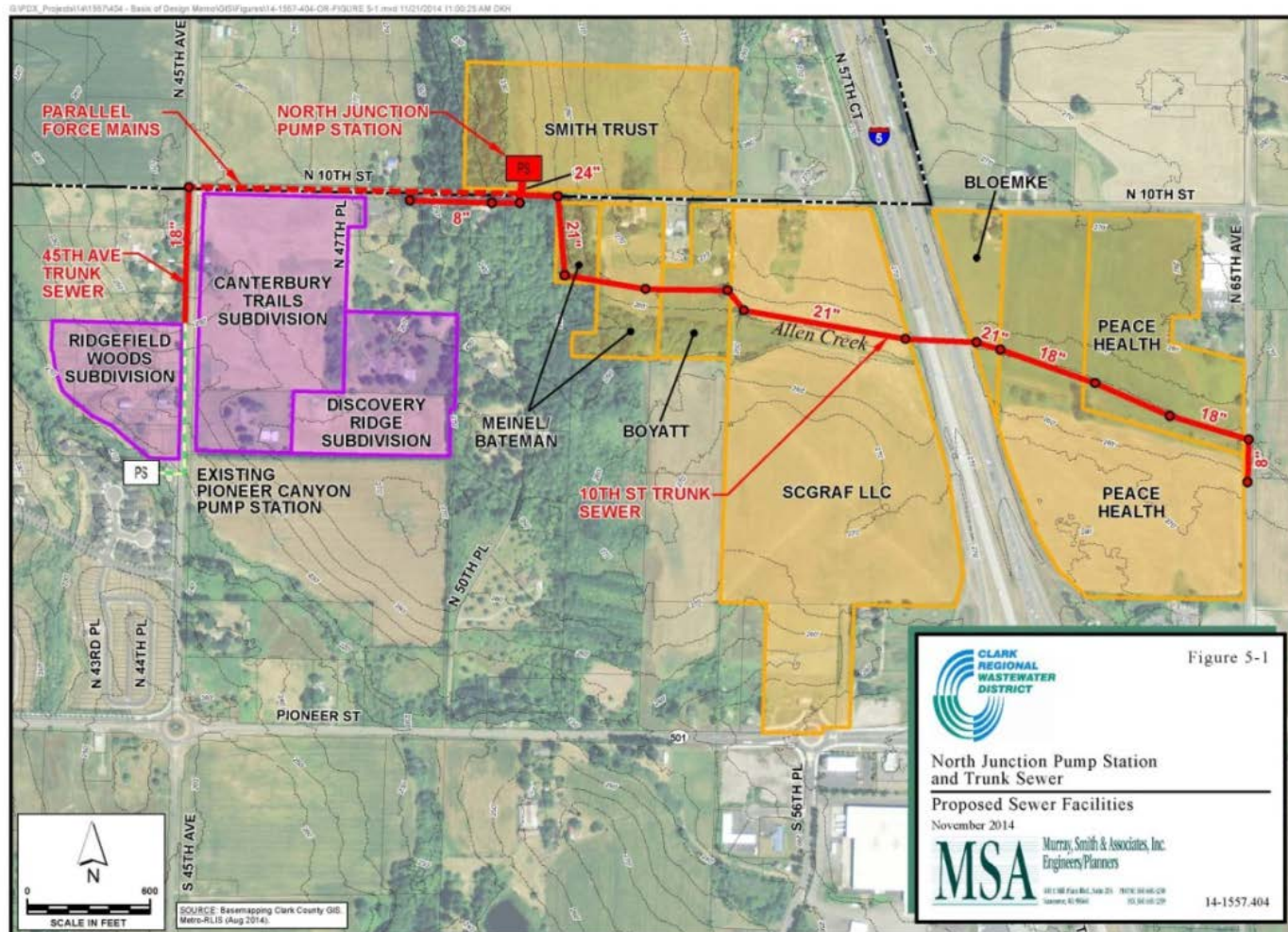
# Capital Program Update – Design

- Pioneer Street Extension
  - \$400K – 400 feet extension from DCWTS Phase 1 on south side of Pioneer Street to north side of Pioneer Street west of I-5
  - Preserves all options for development
  - Ready to serve developable parcels on Pioneer Street frontage
  - Can serve larger area north of Pioneer Street frontage
  - Construction schedule driven by WSDOT Pavement in July 2015



# Capital Program Update – Design

- North Junction Pump Station & Trunk



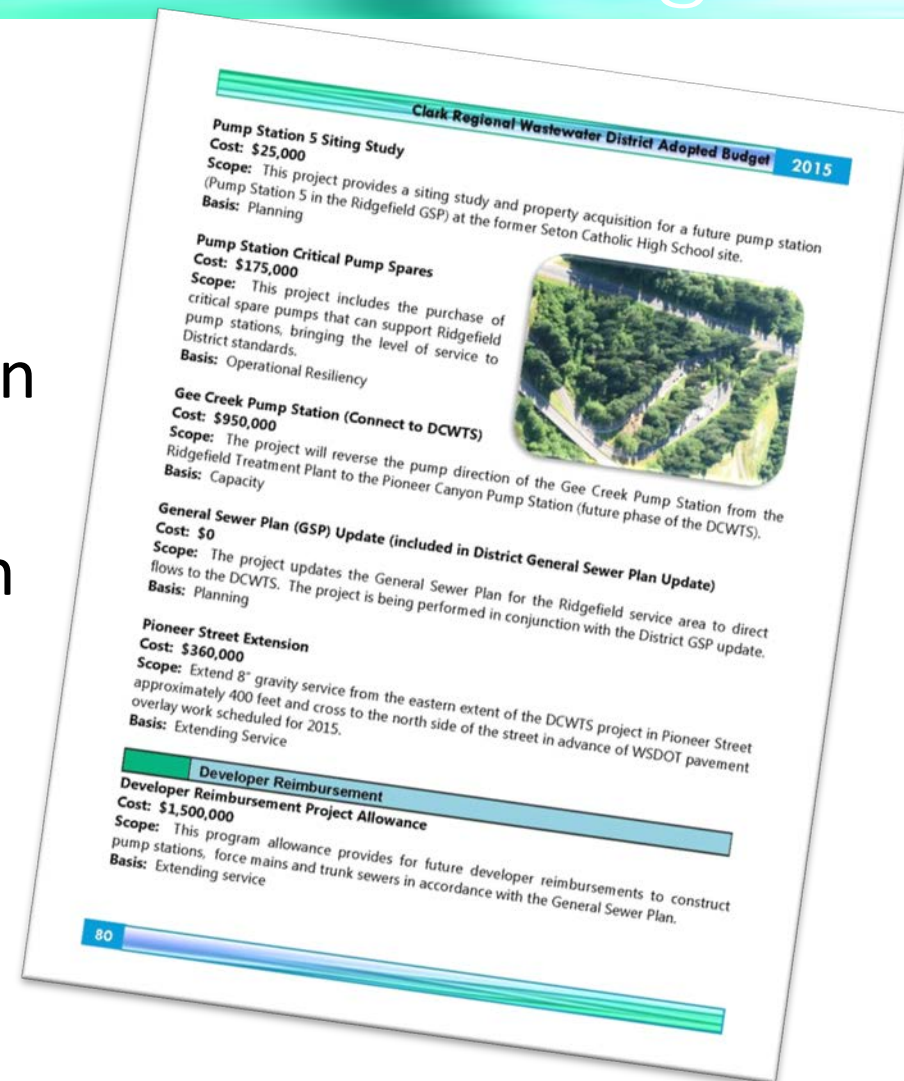


# Capital Program Update – Design

- North Junction Pump Station & Trunk
  - \$3.7M – Over 6,000 feet extension from Pioneer Canyon Pump Station to N 65<sup>th</sup> Ave (NW 11<sup>th</sup> Ave)
  - Serves large developable parcels on east/west side of I-5
  - Includes pump station (PS-4) on N 10<sup>th</sup> Street
  - Construction schedule driven by Clark College campus timeline, currently estimated for 2019

# Capital Program Update – Planning

- Projects in Planning
  - Pump Station 5 (Junction area, NE quadrant)
  - Gee Creek Pump Station (important for eventual plant decommissioning)





# Preliminary Development Activity





# Discussion

