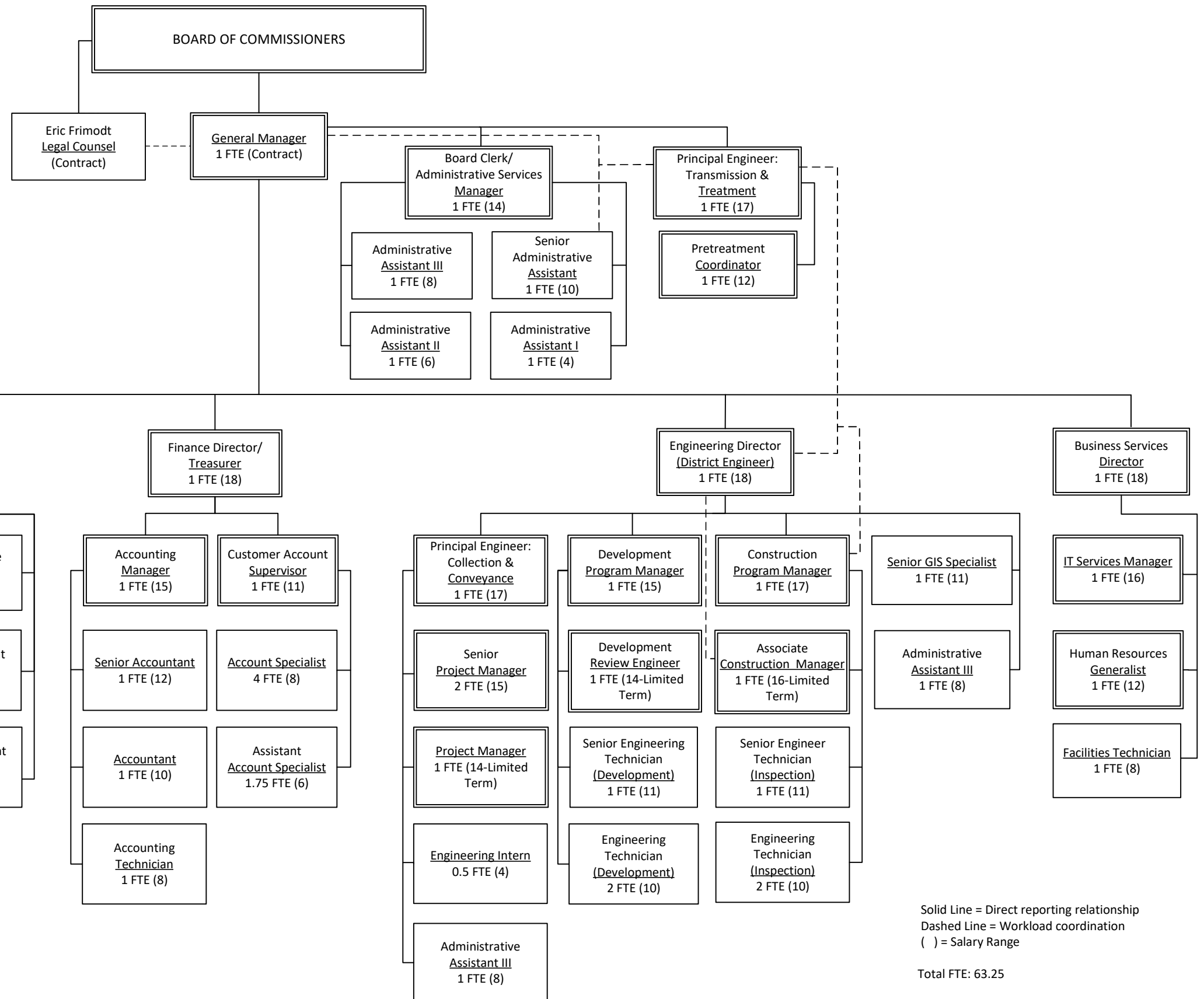


**CLARK REGIONAL WASTEWATER DISTRICT
ORGANIZATION CHART:
EFFECTIVE JUNE 1, 2021 (Updated by General Manager's Authority)**

Service Delivery Model requires contract support for the following functions:

- Public engagement
- Engineering design work
 - ◆ Local collection system
 - ◆ Regional transmission & treatment

Service Delivery Model assumes operational responsibility for the District local collection system (including Ridgefield service area, the Ridgefield Treatment Plant, the Battle Ground Force Main, Salmon Creek Interceptor, Kline Interceptor and Regional Biofilter). Clark County is assumed to operate the Salmon Creek Treatment Plant and the following pump stations and force mains: 36th Avenue and 117th Street. Battle Ground is assumed to own and operate the Battle Ground collection system.



Solid Line = Direct reporting relationship
Dashed Line = Workload coordination
() = Salary Range
Total FTE: 63.25