



## Whipple Creek East Pump Station F and Force Main (CIP 2-1605F)

**Location:** Central

**Number:** TBD

**GL Number:** TBD

**Phase:** Design

**Project Manager:** Les MacDonald

**GSP Basin:** Whipple Creek East – 2-1605

**Capital Improvement Project**

General Facilities

District Installed Infrastructure

Septic Elimination Program

Developer Reimbursement Program

Fleet & Facilities

**Restoration & Replacement Project**

Restoration & Replacement - Gravity

Restoration & Replacement – PS & FM

Restoration & Replacement – Fleet & Facilities

### Project Definition:

Background. Identified in 2017 General Sewer Plan. This facility will be located north of NE 179<sup>th</sup> Street west of the BPA Corridor.

Objective. Serve the Whipple Creek East Basin.

Scope of Work. Install a new duplex pump station with TBD gpm capacity to serve the eastern area of the Whipple Creek East basin. Install a 6-inch force main from the pump station west along NE 179<sup>th</sup> Street to a point of connection at approximately NE 20<sup>th</sup> Avenue.

Project Statistics. Force main – 5,400 feet of 6-inch force main.

Pump Station – TBD hp duplex submersible pumps, emergency generator, local electrical control panel with weather protected enclosure.

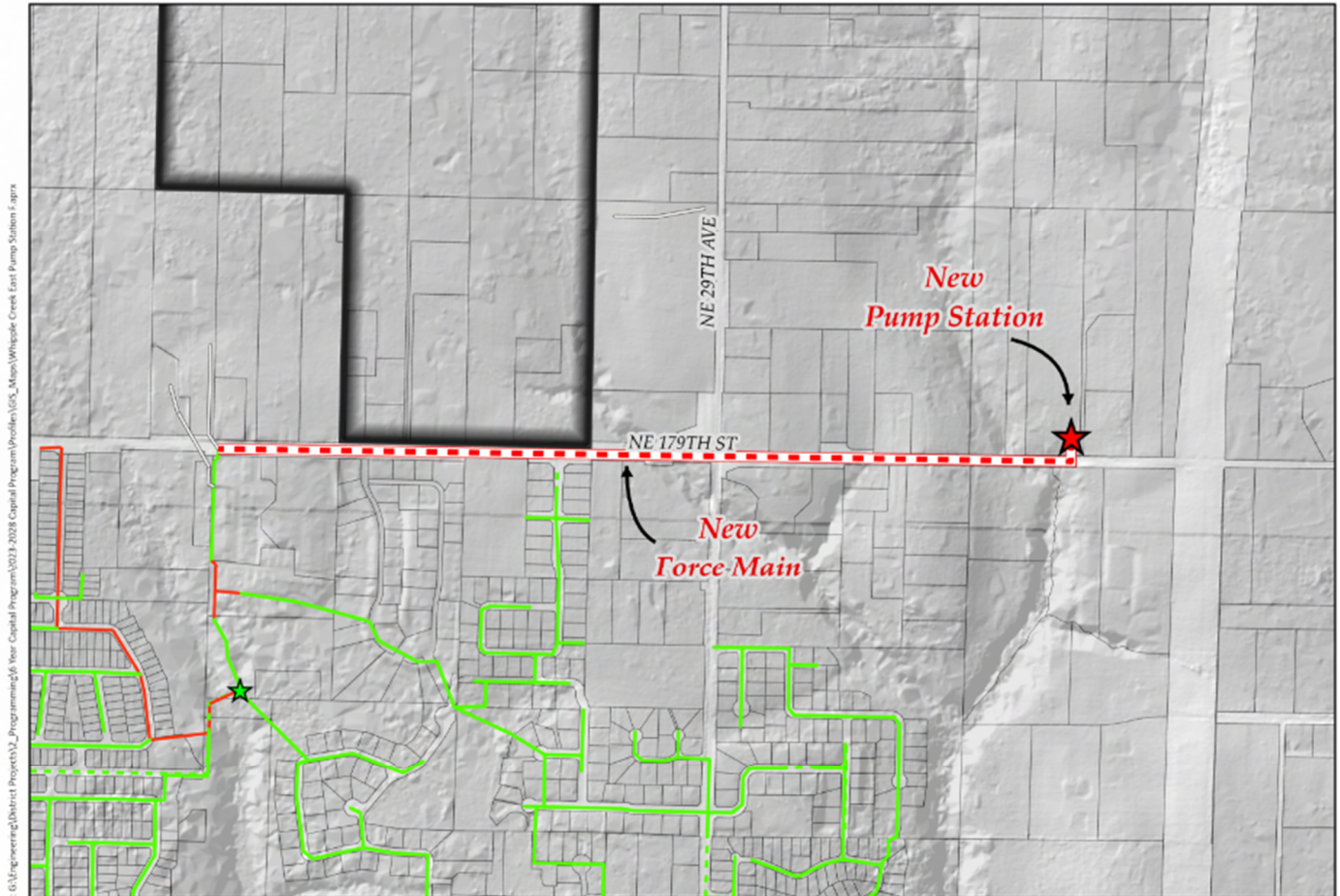
**Photos: (Map of area on the reverse side)**

### Budget Information:

<u>Project Cost Estimate:</u>	
Total Project Cost:	\$3,110,000
Construction Cost:	\$2,840,000
Basis of Estimate:	Design
Date of Estimate:	Sept. 2023

### Schedule Information:

<u>Activity</u>	<u>Year</u>
Pre-design	By Others
Permitting	By Others
Real Property/ROW	By Others
Design	2023-2024
Bid	By Others
Construction	2024-2025



Path: G:\Engineering\District Projects\3\_ Programming\6 Year Capital Program\03-2028 Capital Program\Profiles\GIS\_Maps\Whipple Creek East Pump Station F.spr

**Whipple Creek East  
Pump Station F and Force Main**